

To access eGrade, click on Calculus or Physics HW on our syllabus or schedule:
<http://academic.evergreen.edu/curricular/energy0405/syll.htm>

Syllabus - Energy Systems
 updated 6 Oct 2004

Energy Systems students are responsible for all scheduled activities. Click on links below for details about assignments and activities. Students enrolled only in Science Seminar are not responsible for yellow class meetings (1:00-4:00) or Research projects. (Activities in parentheses indicate faculty commitments, not required program activities.)

Studies show that students remember more of what they DO and less of what they HEAR. Therefore, our classes will involve interactive techniques more than lectures; these techniques include workshops, [debates](#), [Peer Instruction](#) with Conceptests, [Jigsaw Learning](#), [Learning Through Discussion](#), and student research.

FALL 2004 SCHEDULE	weekend	Monday	Tuesday	Wednesday	Thursday	Friday
morning		prep	prep	Finish reading Meet teams	prep	
afternoon	Finish reading Meet teams	1:00-4:30 Energy , Lab II 2242	1:00-4:00 Debates + workshops, Lab II 2242	Post preseminar and Energy PIQs	1:00-4:30 Physics + Calculus , Lab II 2242	Research projects Homework
evening	Post preseminar and Energy PIQs Homework	5:00-6:30 Sem2 C2109 Seminar on oil and alternatives	(4-5 office hours, Lab II, Rm 2272 or 2270)	Physics and Calculus HW due Thurs. am (Tutor hours TBA)	5:00-6:30 Sem2 C2109 Seminar on solar physics and fuel cells	weekly essay due (solar physics research)

This will take you to <http://egrade.wiley.com/live/classes/zita/>

Class Homepage

Class: *Professor Zita's eGrade Class*
 School: *The Evergreen State College*
 Instructor: *EJ Zita*

Welcome to the eGrade homepage for "**Professor Zita's eGrade Class**".

Please bookmark this page. It will be your starting point for all eGrade activity in this class.

Important: [Physics Course Standards for Significant Digits and Error Tolerances](#)

- [Register for this Class](#)
- [Select an Assignment](#)
- [View Past Results or Change Password](#)

Not the correct class? Search for your class [here](#).

First you need to Register for the Class

Type in the code your faculty sent by email, not the code that came with your text

Registration

In order to register an account on eGrade you must provide a valid Wiley Registration Code. This code is a 17-digit number number (like 0305-6981-5888-0123-9) which you should find in a sticker attached to your Student Learning Guide.

Please enter your Wiley Registration Code in the boxes below, and click OK to proceed.

- - - -

Accept:

Registration

eGrade is licensed to you under the terms of the following license. Please carefully read the attached license.

If you have read and consent to all of the terms and conditions of this Agreement, please click the button below marked "Accept". After completing the registration process, you will then have access to eGrade and the course content module(s). If you do not consent, select "Don't Accept", in which case you will not be allowed access to the Product and the course content module(s)

This Agreement shall be construed and interpreted pursuant to the laws of the State of New York applicable to contracts wholly entered into and performed in the State of New York, excluding that body of law dealing with conflict of laws. Any legal action, suit or proceeding arising out of or relating to this Agreement or the breach thereof shall be instituted in a court of competent jurisdiction in New York County in the State of New York and each party hereby consents and submits to the personal jurisdiction of such court, waives any objection to venue in such court and consents to the service of process by registered or certified mail, return receipt requested, at the last known address of such party.

Fill in your information (with your own name, etc.)

The screenshot shows the eGrade Registration page in a Microsoft Internet Explorer browser window. The address bar displays the URL: <http://egrade.wiley.com/live/modules/makeRecord/makeRecord>. The page title is "Registration - Student Registration Form". The Wiley eGrade logo is in the top left corner. The main heading is "Registration". Below it, a paragraph states: "In order to take a test for credit, or to record a score, you need to register with the system. To do this, please fill out the information requested in the form below."

The registration form contains the following fields and instructions:

- Choose a login name:** A text box containing "zita". To the right, it says: "Choose a short, easy to remember login name, for example, your first initial and your last name."
- Choose a password:** A password box with masked characters. To the right, it says: "Keep this password secret to protect your confidential record."
- Retype your password:** A second password box with masked characters. To the right, it says: "Retype your password to make sure you typed it right the first time."
- Your name:** Two text boxes. The first contains "EJ" and is labeled "First Name". The second contains "Zita" and is labeled "Last Name".
- Your student ID Number:** A text box.
- Your email address:** A text box containing "zita@evergreen.edu". To the right, it says: "Optionally, you can enter your email address here."

An "OK" button is located at the bottom of the form.

And you will get a confirmation notice

The screenshot shows the eGrade Registration confirmation page in a Microsoft Internet Explorer browser window. The address bar displays the URL: <http://egrade.wiley.com/live/modules/makeRecord/makeRecord>. The page title is "Registration - Student Registration Form". The Wiley eGrade logo is in the top left corner. The main heading is "Registration". Below it, a paragraph states: "You have entered data to create a user record for:"

The confirmation page displays the following information:

- Name:** EJ Zita
- Email Address:** zita@evergreen.edu
- Student ID Number:**
- Your login name:** zita
- Your class:** Professor Zita's eGrade Class

Below this information, it asks: "Do you wish to continue?" with "No" and "Yes" buttons. The "Yes" button is highlighted.

You have several ways to open an assignment. One way is to click on Calculus HW on the syllabus:

Syllabus - Energy Systems
updated 6 Oct 2004

Home Science Seminar **Syllabus** Schedule WebX HW + Help Texts Your research Links & Resources

Energy Systems students are responsible for all scheduled activities. Click on links below for details about assignments and activities. Students enrolled only in Science Seminar are not responsible for yellow class meetings (1:00-4:00) or Research projects. (Activities in parentheses indicate faculty commitments, not required program activities.)

Studies show that students remember more of what they DO and less of what they HEAR. Therefore, our classes will involve interactive techniques more than lectures; these techniques include workshops, [debates](#), [Peer Instruction](#) with Conceptests, [Jigsaw Learning](#), [Learning Through Discussion](#), and student research.

FALL 2004 SCHEDULE	weekend	Monday	Tuesday	Wednesday	Thursday	Friday
morning		prep	prep	Finish reading Meet teams	prep	
afternoon	Finish reading Meet teams	1:00-4:30 Energy , Lab II 2242	1:00-4:00 Debates + workshops, Lab II 2242	Post preseminar and Energy PQs	1:00-4:30 Physics + Calculus , Lab II 2242	Research projects Homework
evening	Post preseminar and Energy PQs Homework	5:00-6:30 Sem2 C2109 Seminar on oil and alternatives	(4-5: office hours, Lab II, Rm 2272 or 2270)	Physics and Calculus HW due Thurs. am (Tutor hours TBA)	5:00-6:30 Sem2 Physics Seminar on and fuel (solar physics research)	weekly essay due (solar physics research)

If you Select the first assignment like this:

WILEY eGrade

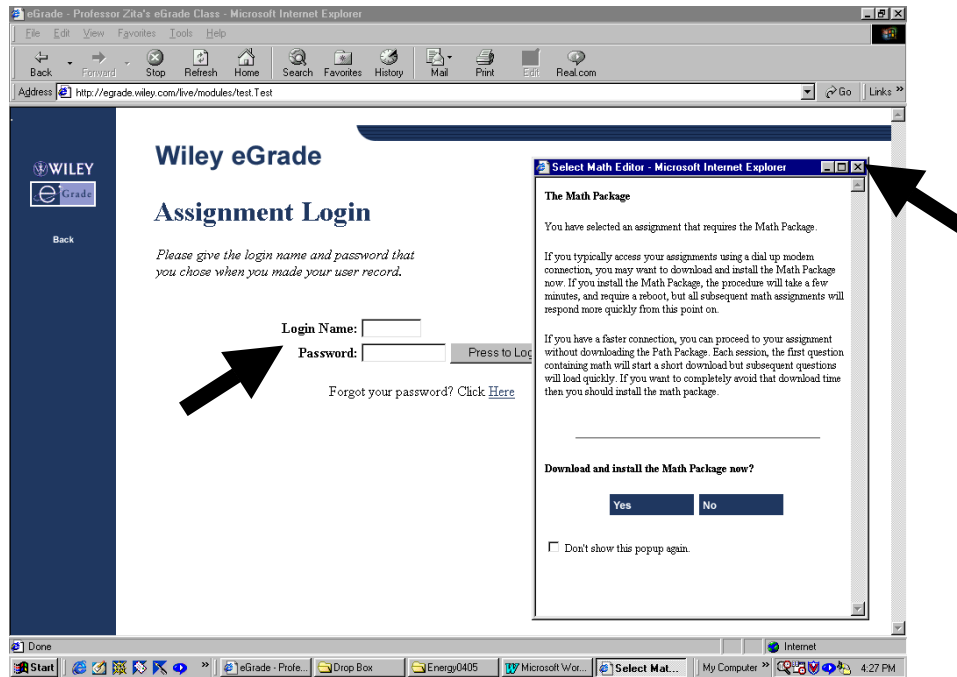
Select the Assignment in Professor Zita's eGrade Class

Please select the assignment you want from the list below.

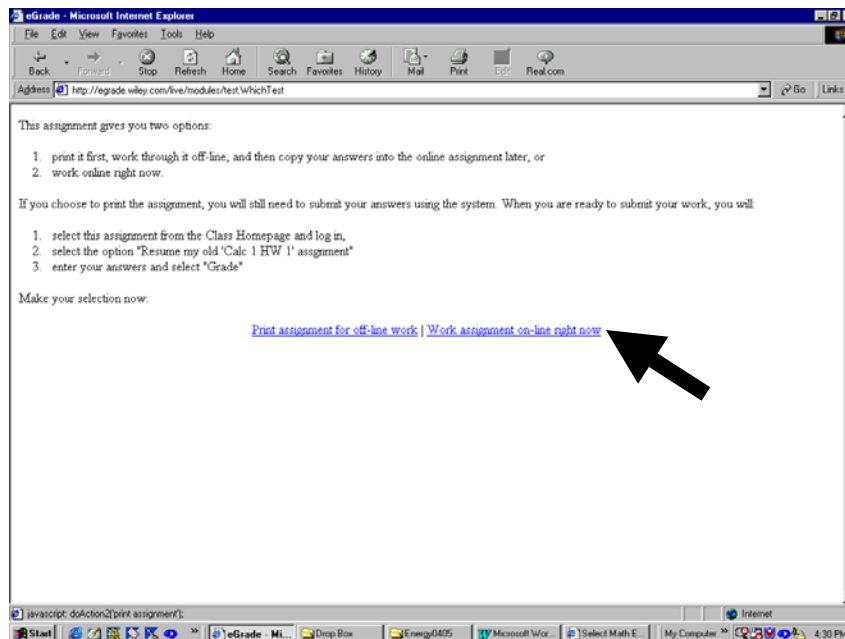
Calc 1 HW 1
Calc 1 HW 2
Chapter 1
Chapter 2
Chapter 3
Chapter 4

Enter

You may be asked to login. Use the name and password your just created.
Don't worry about the Math Package for now. You can load it next time you logon if you like.



If you choose Start a new assignment, you will have two options:



If you choose to Work an assignment on-line right now, the online assignment will open up and you can start inputting your answers.

eGrade: Professor Zita's eGrade Class, Calc 1 HW 1 - Microsoft Internet Explorer

http://egrade.wiley.com/live/modules/unproctoredTestPrint

WILEY eGrade

Graded Session - Credit Awarded

[Back] [Next] [Grade] [Help] [Quit]

Professor Zita's eGrade Class, Calc 1 HW 1

Question 1: (3 points)

Match each story to the most appropriate graph.

velocity time (I)

velocity time (II)

velocity time (III)

velocity time (IV)

-- As soon as I'd dropped off the package, I turned around and drove home

-- I took a drive in the country, stopped to have lunch, and continued at a slower speed to look

3 My car broke down and I parked it at the road



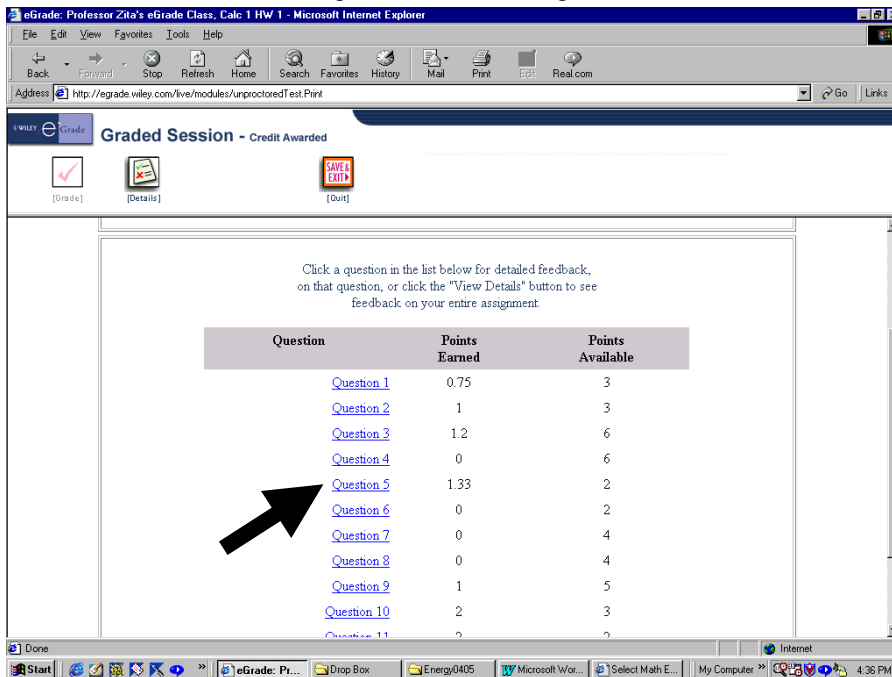
To go to the next problem, click NEXT: [\[Next\]](#)



When you are done, or ready for feedback, click GRADE [\[Grade\]](#)

You will then get feedback on your work. You can retake an assignment as many times as you like.

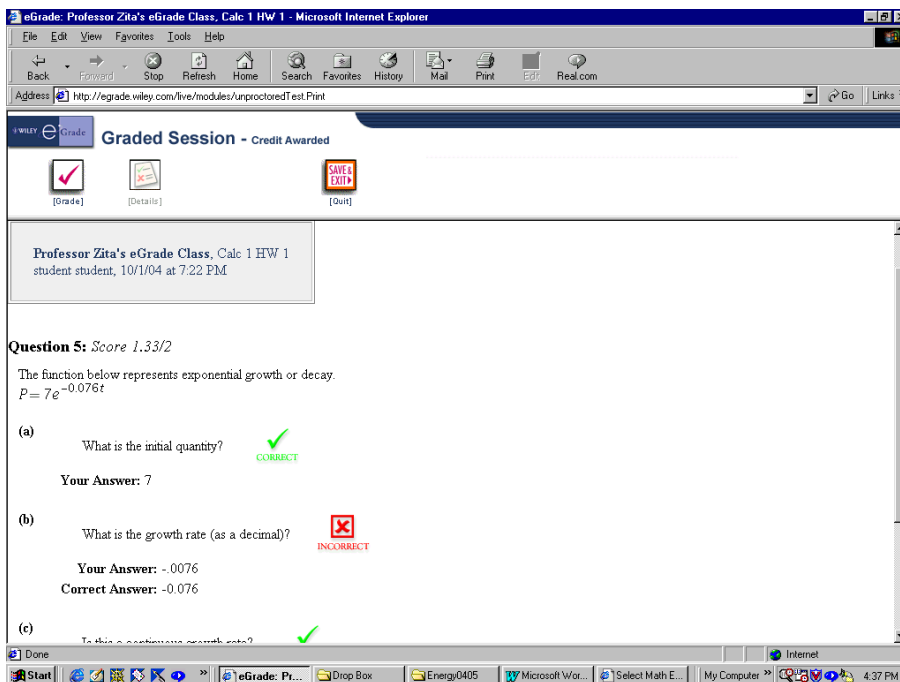
Here are results from an incomplete homework assignment:



Click a question in the list below for detailed feedback, on that question, or click the "View Details" button to see feedback on your entire assignment.

Question	Points Earned	Points Available
Question 1	0.75	3
Question 2	1	3
Question 3	1.2	6
Question 4	0	6
Question 5	1.33	2
Question 6	0	2
Question 7	0	4
Question 8	0	4
Question 9	1	5
Question 10	2	3
Question 11	2	2

You can get detailed feedback by clicking on any Question:



Professor Zita's eGrade Class, Calc 1 HW 1
student student, 10/1/04 at 7:22 PM

Question 5: Score 1.33/2

The function below represents exponential growth or decay.

$$P = 7e^{-0.076t}$$

(a) What is the initial quantity? **CORRECT**
Your Answer: 7

(b) What is the growth rate (as a decimal)? **INCORRECT**
Your Answer: -.0076
Correct Answer: -.076

(c) Is this a continuous growth rate? **CORRECT**

You can take each assignment as many times as you like, to improve your score and, more importantly, to develop deeper understanding.

We recommend that you work the homework on paper in advance.

Repeat this process to register for our physics eGrade site. Click on Physics HW on the syllabus or schedule

Syllabus - Energy Systems
updated 6 Oct 2004

Home Science Seminar **Syllabus** Schedule WebX HW + Help Texts Your research Links & Resources

Energy Systems students are responsible for all scheduled activities. Click on links below for details about assignments and activities. Students enrolled only in Science Seminar are not responsible for yellow class meetings (1:00-4:00) or Research projects. (Activities in parentheses indicate faculty commitments, not required program activities.)

Studies show that students remember more of what they DO and less of what they HEAR. Therefore, our classes will involve interactive techniques more than lectures; these techniques include workshops, debates, Peer Instruction with Conceptests, Jigsaw Learning, Learning Through Discussion, and student research.

FALL 2004 SCHEDULE	weekend	Monday	Tuesday	Wednesday	Thursday	Friday
morning		prep	prep	Finish reading Meet teams	prep	
afternoon	Finish reading Meet teams	1:00-4:30 Energy , Lab II 2242	1:00-4:00 Debates + workshops , Lab II 2242	Post <u>preseminar</u> and <u>Energy PIQs</u>	1:00-4:30 Physics + Calculus , Lab II 2242	Research projects Homework
evening	Post <u>preseminar</u> and <u>Energy PIQs</u> Homework	5:00-6:30 Sem2 C2109 Seminar on oil and alternatives	(4-5: office Lab II, P... 2242)	<u>Physics and Calculus</u> HW due Thurs. am (Tutor hours TBA)	5:00-6:30 Sem2 C2109 Seminar on hydrogen and fuel cells	<u>weekly essay due</u> (solar physics research)

And it will take you to the physics site, which looks a lot like the calculus site, except named /zitae

eGrade - Professor Zita's eGrade Course - Physics

Class: Professor Zita's eGrade Course - Physics
School: The Evergreen State College
Instructor: EJ Zita

Welcome to the eGrade homepage for "Professor Zita's eGrade Course - Physics".

Please bookmark this page. It will be your starting point for all eGrade activity in this class.

Important: Physics Course Standards for Significant Digits and Error Tolerances

- [Register for this Class](#)
- [Select an Assignment](#)
- [View Past Results or Change Password](#)

Not the correct class? Search for your class [here](#).

Then repeat the same process. You only have to register once for physics, and once for calculus.

Once you are registered, you can now access homework assignments as your faculty creates them. Choose Select an Assignment, and you will be prompted to login. Use the same name and password as for calculus HW.