

# Biology

You can study:

*Biochemistry*  
*Ecology*  
*Field Biology*  
*Human Physiology*  
*Invertebrate Physiology*  
*Marine Biology*  
*Microbiology*  
*Microscopy*  
*Molecular biology*  
*Molecular genetics*  
*Nutrition*  
*Plant physiology and botany*

Study in the sciences at Evergreen provides opportunities found in few schools. We invite you to experience the unique features of study at Evergreen.

Evergreen's *interdisciplinary studies* approach combines ordinarily separate disciplines into an integrated program, just as they are combined in real scientific problem solving. Working with a team of faculty, you learn and see how theories in biology, chemistry, physics, math, computer science and other sciences relate. Each interdisciplinary program focuses on a theme or topic and uses seminars, lectures, labs and workshops to bring together a variety of subjects pertinent to the theme or topic. Students usually take only one full-time program each quarter.

For example, the year-long "Molecule to Organism" program takes students through an integrated view of modern biochemistry, genetics, cell biology, immunology, developmental biology, animal physiology and the social and philosophical implications arising from biological research.

Close faculty/student contact gives you the benefit of working directly with faculty in your special field. You have the opportunity to study and consult with faculty on a variety of research topics, or to pursue, with faculty guidance, an Internship off-campus.

## Sequence of Study

You will find these Evergreen programs in **Biology** and related sciences:

### First and Second Year

Any *Core Program*. These programs provide the essential educational background so important to beginning students. "Exploration, Discovery and Change" and "Chaos, Calculus and Confucius" have special emphasis on the physical and biological sciences.

### Second or Third Year

Intermediate programs including:

"Ecological Agriculture," "Geography and Environment" or "Natural History of the American Southwest: Here and There" for emphasis on environmental studies, field biology, human ecology, geography and earth science;

"Human Health and Behavior" for an emphasis on human biology, nutrition, genetics, health and the helping professions;

"Foundations of Natural Science" and "Matter and Motion" offer study in chemistry, physics and calculus as preparation for advanced lab science programs.

**Intermediate and Advanced Study** is offered in **Biology** with different areas of interest, including:

"Molecule to Organism" for those interested in lab biology and pre-medical studies.

"Introduction to Marine Environments"

"Topics in Marine Studies"

"Mammalogy"

"Ornithology"

"Science of Mind"

## Other Advanced Studies

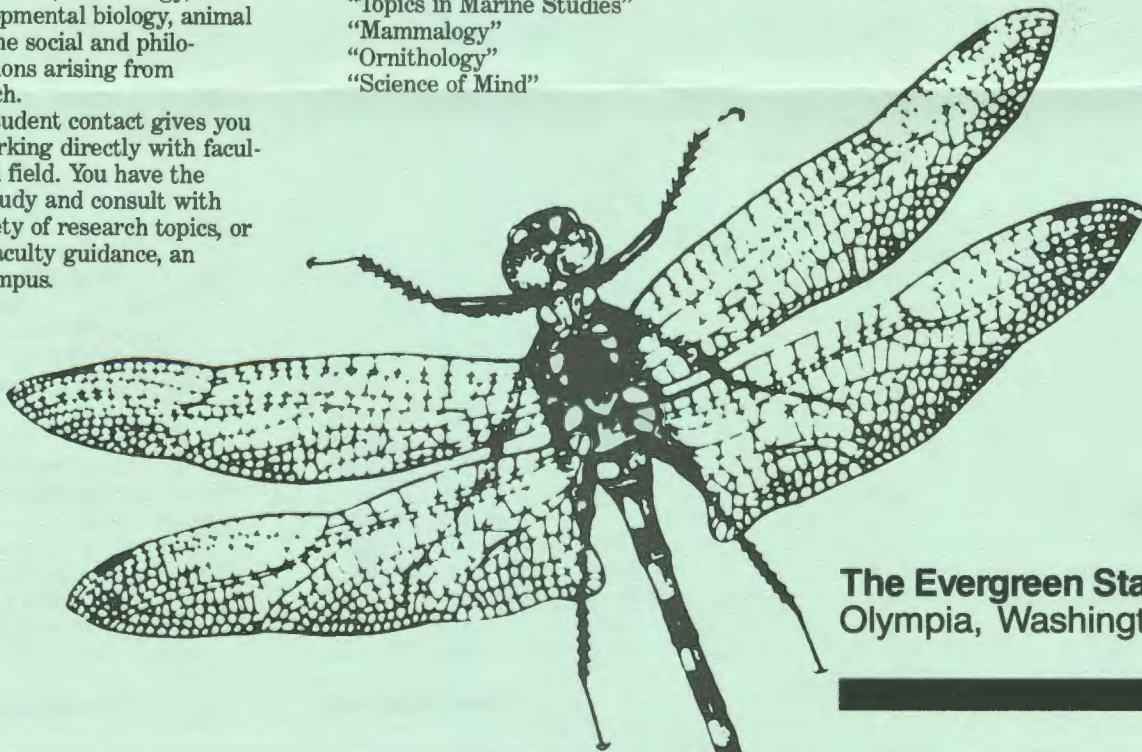
Senior projects, individual contracts and internships are available for advanced students in a variety of areas.

## Facilities/Equipment

Facilities and equipment are particularly important in the sciences. Access, though, is even more vital. We have focused our science programs on undergraduates. You will have access to an excellent array of graduate level research facilities including a scanning electron microscope, physiology treadmill, complete pesticide analysis lab, human pathology lab, molecular genetics lab and biofeedback equipment. Several faculty are engaged in research and encourage students to pursue research as well.

## Advising Services

Our Advising Services enable you to make intelligent decisions about your education at each step of the way, rather than follow standardized requirements. In other words, you are able to work with a faculty or staff advisor in designing a coherent path through our Core, intermediate and advanced offerings. In this way you can combine programs, projects and internships as you work toward your degree. If you have chosen a field of study, if you are undecided, or if you change your mind later, our advisors can assist you in making appropriate plans.



The Evergreen State College  
Olympia, Washington



### The Learning Environment

Evergreen challenges you to think independently and creatively. You will find that your teachers encourage you to develop your potential and your interests as a student by working productively with others rather than competing with them. Evergreen faculty provide written evaluations rather than grades to reflect your achievement.

Evergreen is a public, liberal arts college of 3000 students, offering Bachelor's and Master's degrees. Tuition is \$537 per quarter for Washington state residents and \$1883 per quarter for non-residents.

### Life After Evergreen

Overall, Evergreen graduates enjoy unusual success. In our most recent placement survey, 90% of our graduates who responded reported they are employed, in graduate school or in other placements of their choice. A sample of these placements include: University of Washington, University of Oregon, Cornell, U.S. Fish and Wildlife Service, U.S. Forest Service and various research labs.

For further information about Evergreen and for help in planning your studies in **Biology** at Evergreen, please contact:

Admissions: (206) 866-6000, ext. 6170  
Academic Advising: (206) 866-6000, ext. 6312

or write:

Admissions Office  
The Evergreen State College  
Olympia, WA 98505

at Evergreen 1991-92

# Biology

