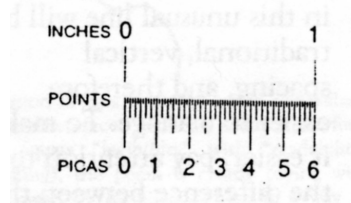


# measurement



## Measurement Data

### English-American Point System

1 pt.	=	1/12 pica	or	1/24 inch
6 pts.	=	1/2 pica	or	1/4 inch
12 pts.	=	1 pica	or	1/8 inch
72 pts.	=	6 picas	or	1 inch*

---

$$1 \text{ inch} = 6 \text{ picas, } 0 \text{ points}$$

---

$$1/8 \text{ inch} = 5 \text{ picas, } 3 \text{ points}$$

---

$$1/4 \text{ inch} = 4 \text{ picas, } 6 \text{ points}$$

---

$$3/8 \text{ inch} = 3 \text{ picas, } 9 \text{ points}$$

---

$$1/2 \text{ inch} = 3 \text{ picas, } 0 \text{ points}$$

---

$$5/8 \text{ inch} = 2 \text{ picas, } 3 \text{ points}$$

---

$$3/4 \text{ inch} = 1 \text{ pica, } 6 \text{ points}$$

---

$$7/8 \text{ inch} = 0 \text{ picas, } 9 \text{ points}$$

---

---

## using numbers

when laying out your design, it helps to work in picas, or to be able to switch back and forth quickly between picas and inches.

choose your line length or the height of your form (depending, usually on the orientation of your form in the bed) based on a convenient furniture length that gives you plenty of room for spacing on both ends of your text.

when setting unconventional lines, measure your gaps carefully before you start sticking random spacing in to fill; this will help you create the simplest and most stable form.

When proofing, never simply "eyeball" the placement of text on the page. measure with your pica stick, and be exact.

## COMMON CONVERSIONS

When setting 12 point type, a 24 point EN is a convenient Quad;  
and a 48 point 4-to-EM makes a 4-Em Quad.

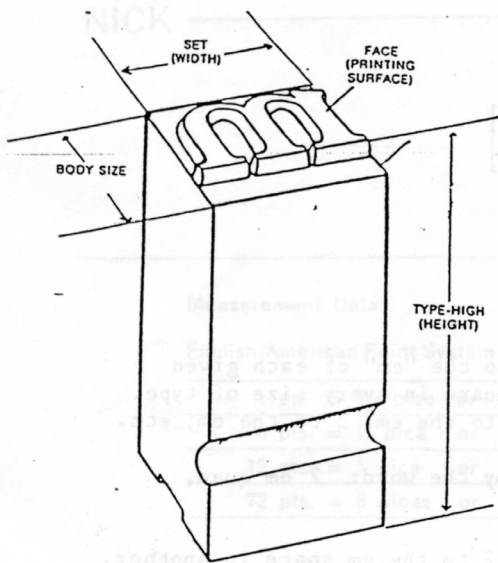
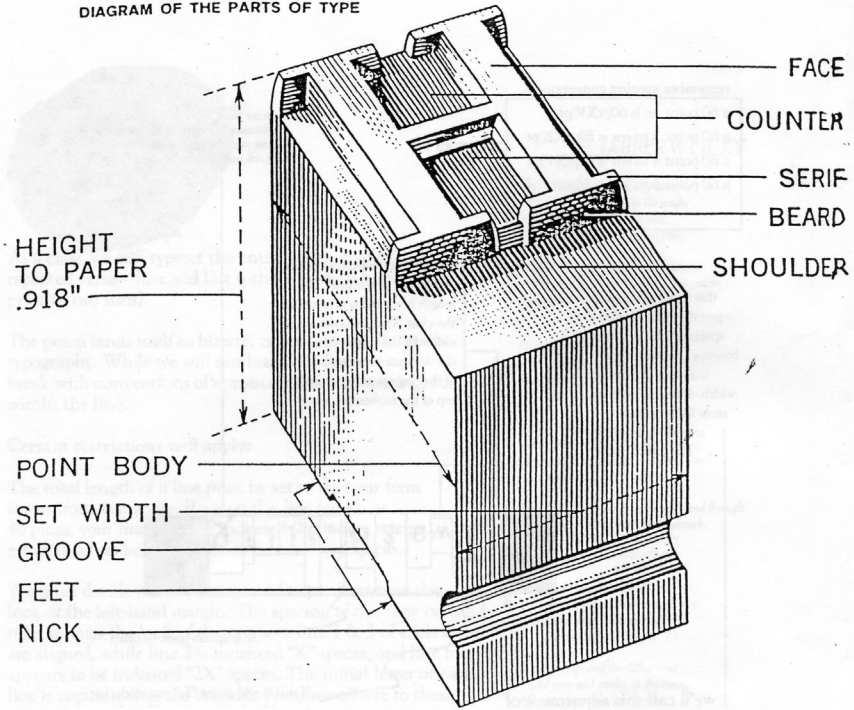
When setting in larger sizes, say 48, 60, and 72, the scarcity of spacing sometimes requires some stacking of other sizes:

two 24 point EMs is equal to a 48 point EN

two 30 point EMs is equal to a 60 point EN

two 36 point EMs is equal to a 72 point EN

DIAGRAM OF THE PARTS OF TYPE



38. Enlarged type with its more important features.

