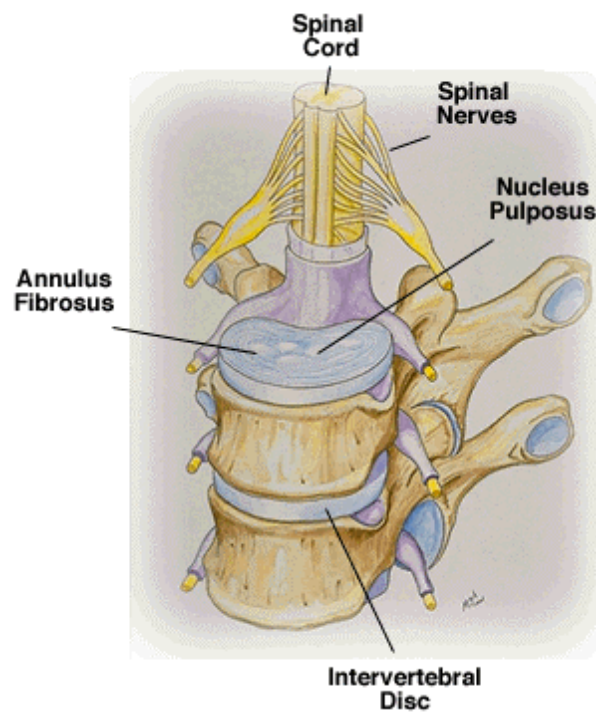
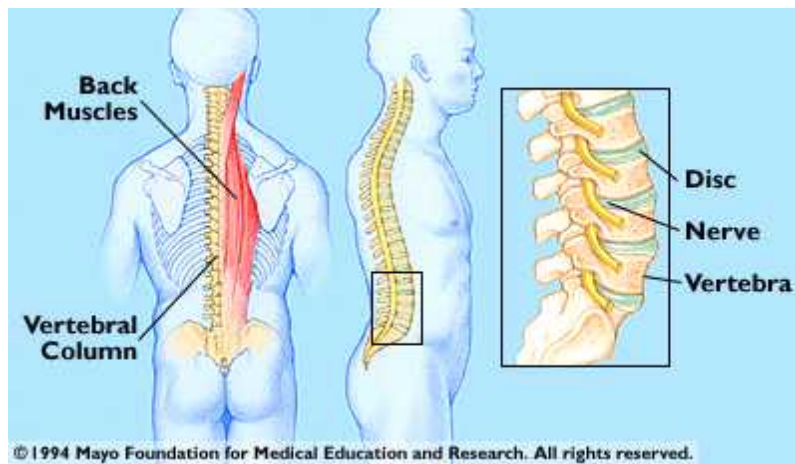
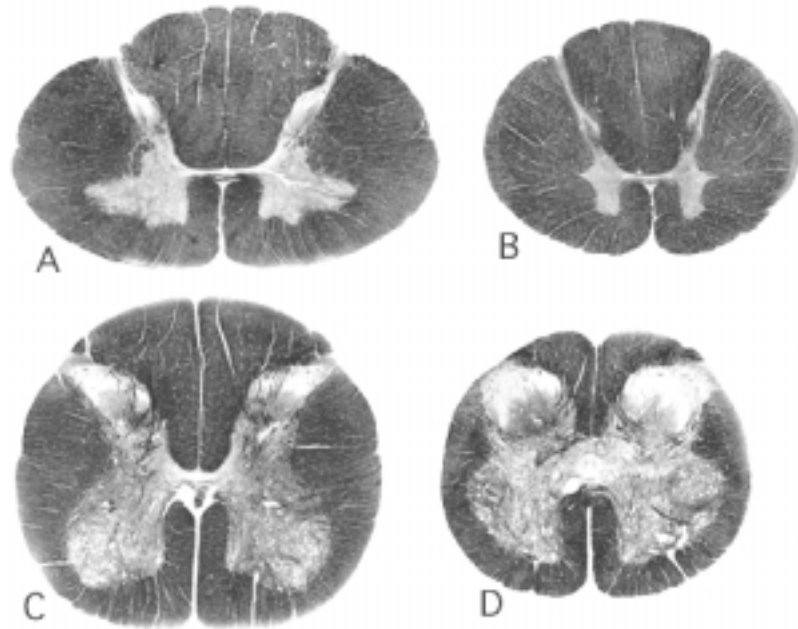


Spinal Cord and Brain:





Cross sections of the spinal cord: A. Spinal cord section at the cervical region B. Spinal cord section at the thoracic region C. Spinal cord section at the lumbar region D. Spinal cord section at the sacral region
 *Note that the amount of white tissue and dark tissue changes as you go from the sacral to the cervical spinal cord. Why do you think this is?

