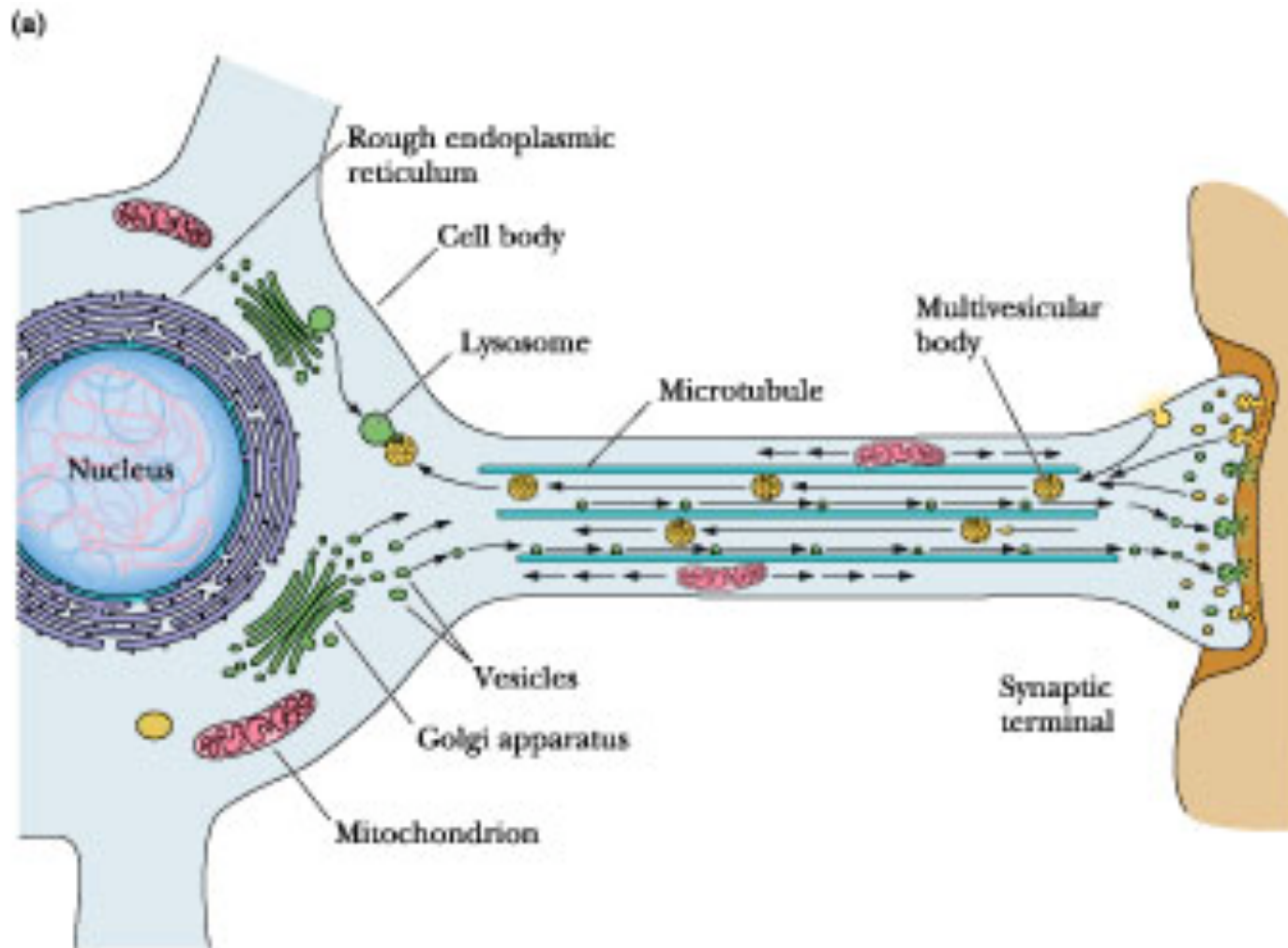


Axonal Transport



Axonal Transport

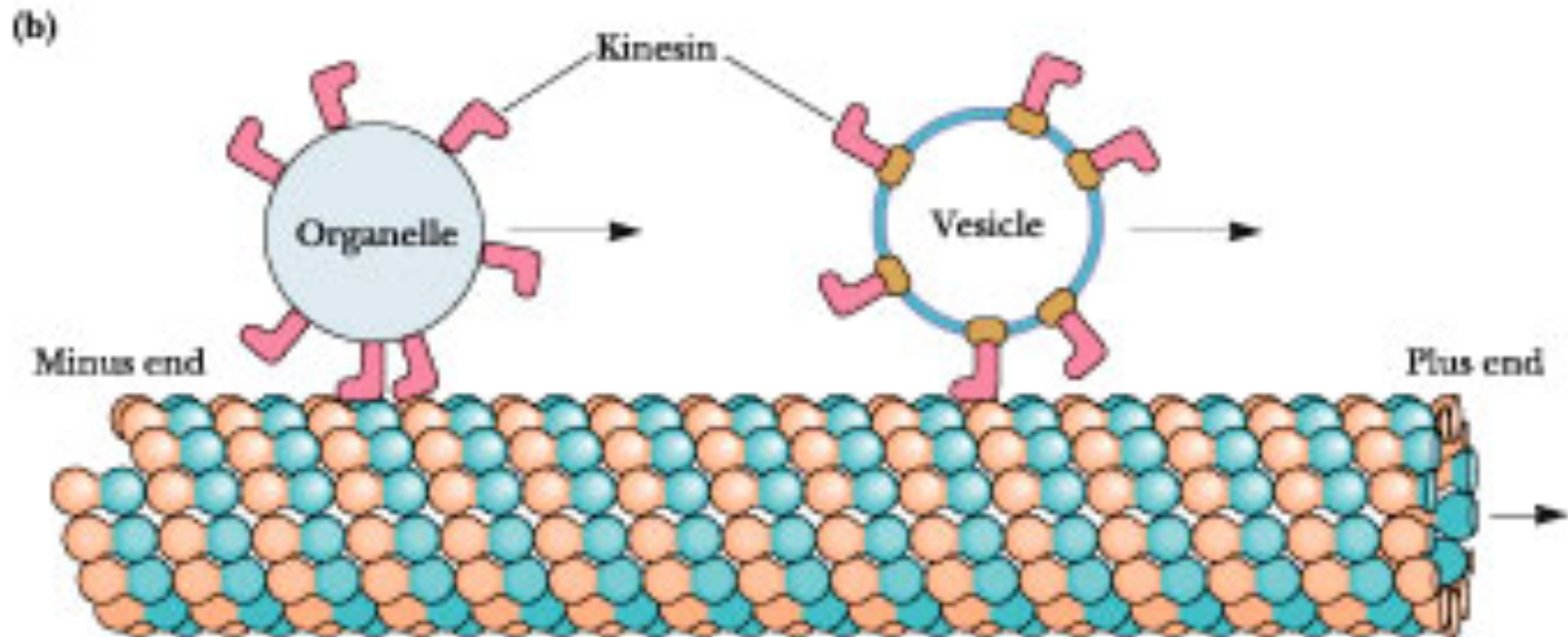
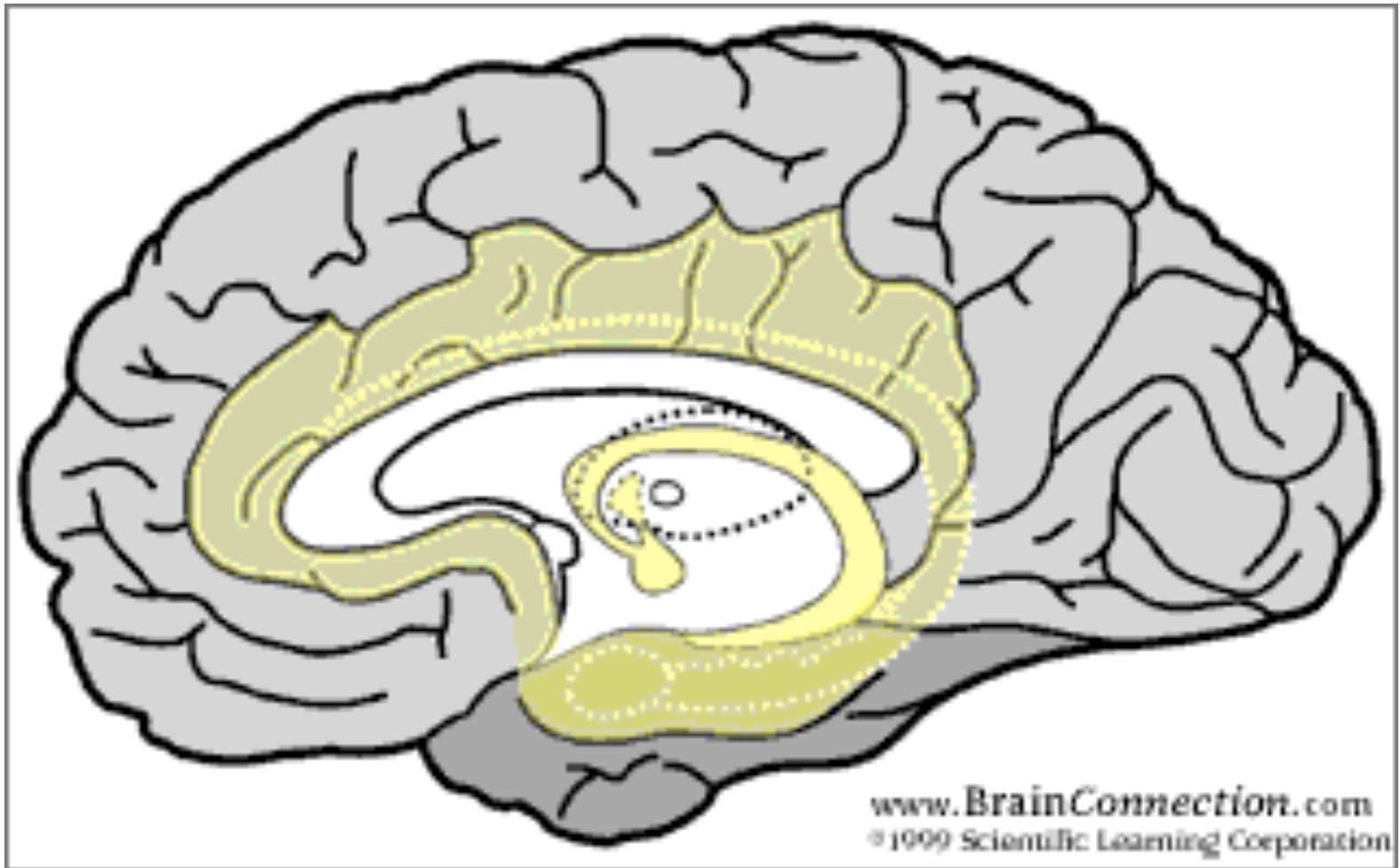


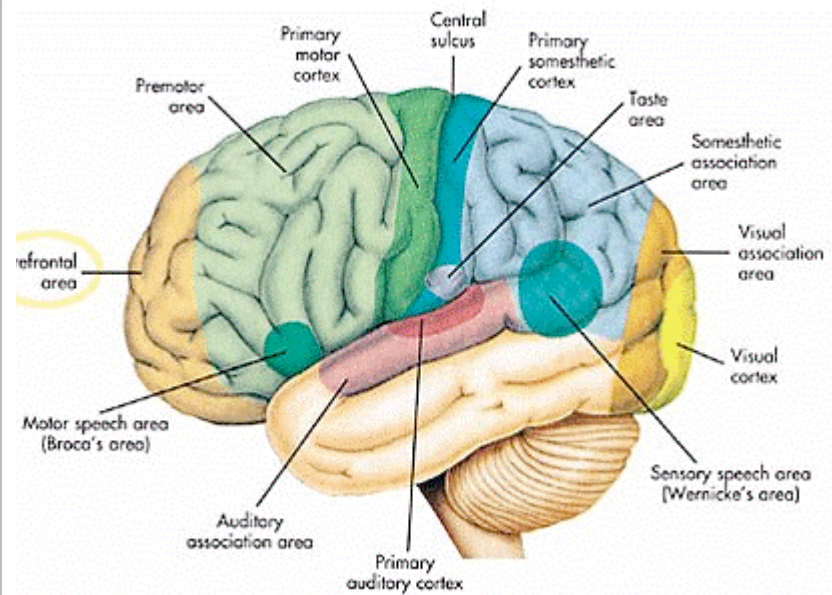
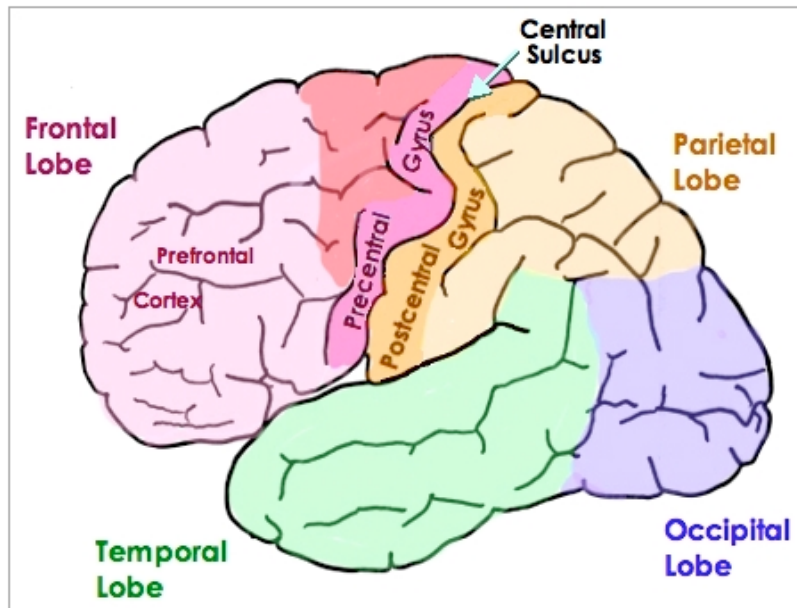
Figure 17.8 • (a) Rapid axonal transport along microtubules permits the exchange of material between the synaptic terminal and the body of the nerve cell. (b) Vesicles, multivesicular bodies, and mitochondria are carried through the axon by this mechanism. (Adapted from a drawing by Ronald Vale)

www.web.virginia.edu/Heidi/chapter17/chp17.htm

Medial Section



Structure and Function



- The most common arrangement