

# Panther Creek ~ 162 yrs

## Information for Researchers

Transects 130 m long x 13 m wide

Transect 3 is the focus transect with rigged trees

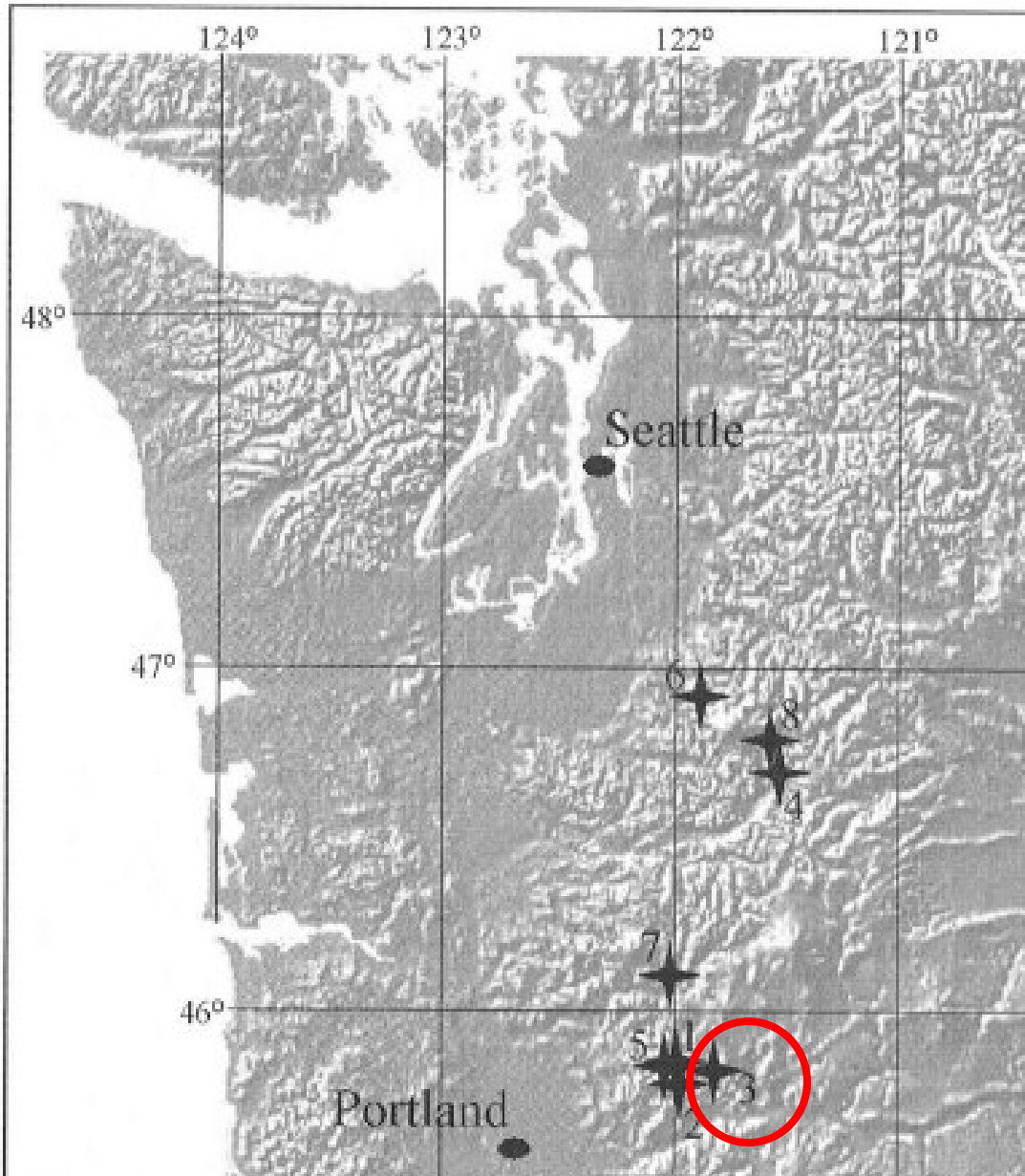
No high clearance or gate keys required.



Panther Creek

# Panther Creek

## Site #3 (Van Pelt & Nadkarni 2004)



- For information on permitting for this site contact Sarah Greene at the Forest Service. [sgreene@fs.fed.us](mailto:sgreene@fs.fed.us)

# Panther Creek General Information

- Lodging – Forest Service bunkhouses, or camping, or motels in Carson, WA.
- Nearest store is in Carson, WA (~ 8 miles south of Stabler on Wind River Road)
- Nearest hospital:
  - **Mount Hood Memorial Hospital**  
(<http://www.providence.org/HoodRiver/default.htm>), 811  
13th St, Hood River, OR 97031, US Phone: 1-800-955-3911.

# Local Lodging

- Lodging for the Wind River sites is available in the Forest Service 'bunk' houses. Cost is 3.76 per person per night.

Contact Annie Hamilton:

[annieh@u.washington.edu](mailto:annieh@u.washington.edu), 509-427-7028, to make reservations, ask questions about the lodging, etc.

- If the lodging is booked, then there are campgrounds and hotels nearby.

# Campgrounds

## **52 Beaver Campground (USDA FS)**

Wind River Ranger District

(509) 427-3200

Reservation Phone: 8002802267



From SR 14, drive N from Carson for 13 mi along the Wind River Hwy.

**Features:** Shady river setting with large grassy field for day use

---

## **53 Paradise Creek Campground (USDA FS)**

Wind River Ranger District

(509) 427-3200

Reservation Phone: 8002802267

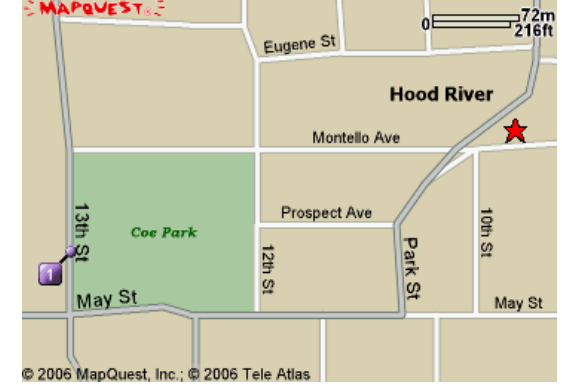


From SR 14, drive N from Carson for 20 mi along the Wind River Highway.

**Features:** Lush cedar and Douglas fir grove


# Closest Hospital

•Hood River Memorial (OR) Hospital is closest (~ 25 miles). There is another about the same distance on the Washington side in White Salmon Wa but it is not recommended!



Turn LEFT onto WA-14.	17.1 miles
Turn RIGHT onto HOOD RIVER BRIDGE (Portions toll).	1.0 miles
Merge onto I-84 W toward HOOD RIVER / PORTLAND.	0.3 miles
Take EXIT 63 toward HOOD RIVER / CITY CENTER.	0.1 miles
Turn LEFT onto 2ND ST.	0.1 miles
Turn RIGHT onto OAK ST / US-30 / OR-35.	0.6 miles
Turn LEFT onto 13TH ST.	0.2 miles
End at <b>Hood River Memorial Hospital</b>	
811 13th St, Hood River, OR 97031, US	

# Driving Directions (from Olympia)

From Hwy 101, merge onto I-5 S toward PORTLAND	97 miles
Merge onto I-205 S via EXIT 7 toward WA-14 / SALEM / I-84.	14.7 miles
Merge onto I-84 E / US-30 E via EXIT 22 toward THE DALLES	34.6 miles
Take the US-30 exit- EXIT 44- toward CASCADE LOCKS / STEVENSON	0.3 miles
Stay STRAIGHT to go onto WA-NA-PA ST / US-30.	0.1 miles
Turn LEFT onto BRIDGE OF THE GODS (1.00 toll to cross this bridge)	0.3 miles
Turn RIGHT onto WA-14 / EVERGREEN HWY. Continue to follow WA-14. You will go through Stevenson.	5.9 miles
Turn SLIGHT LEFT onto WIND RIVER RD and continue on the main road (Wind River HWY) to Stabler. You will pass through Carson. The sign to turn onto Wind River Road will mention that you are heading into the Wind River Recreation Area.	8.5 miles
Continue past Stabler (although this is where you turn off for the other Wind River sites) to Warren Gap road on your right (east) and turn right.	0.6 miles
Follow the road to a T-intersection and then turn left (North) onto this road (Road #65). (The Panther Creek campground is just south of this intersection).	1.2 miles
Follow the road to the #68 Road on your right. Take a sharp right onto #68 road.	1.8 miles
Continue on this road to the 6801 road that will be on your left (staying straight – rather than veering right). Turn left onto 6801. 	2.1 miles
Continue on 6801 – you will pass 022 and 023 roads on your right. Travel to road 024 on your right (there isn't a sign marking this road). Turn into road 024 and park here.	1.4 miles
<b>Note: No gate keys required, and road should be passable with low-clearance vehicle.</b>	





# Transect Locations

T1	Walk up Road 024 to red flagging on the left (east) side of the road. There is a silver rectangular tag on a small TSHE near the road that has a tag with directions.
T2	To access T2, walk up the road to near the end of the road where you will see a red flagged trail to the start of T2. There is a silver rectangular tag on a small TSHE. From this tree travel 20 m at a bearing of 280 degrees to the start of T2. (?~0.35 miles along 024).
T3	Follow the road to it's end where there is a makeshift campsite and the stream running just beyond the campsite at the end of the road. If you follow the stream ~ 150 m west and go up the slope heading south a bit from the stream and you will see the end of T3. The stream is a bit difficult to trek up though!
T4	To access T4, locate a big PSME that is adjacent to the road, near a tree that has a "Caution Forest Study Area" sign. From this tree with the rectangular silver tag, travel 40 m at a bearing of 214 degrees to the start of T4.
	Note: All paths to transects should be flagged red. Transects are 130m long x 13 m wide.

**Table 1. Summary of site characteristics. The Carbon River stand is on an alluvial flat, and the Cedar Flats stand is on swampy ground, thus reducing a need for summer precipitation at both sites. Precipitation data does not include condensation from fog, which can add 10–30% at all of these sites.**

Site		Elevation (m)	Age	Slope (% aspect)	Plant association*	Precipitation (cm)			Temp (°C) (annual Ave.)
						Ann.	July–Sep.	Snowfall	
PL	Plantation	624	50	0–15% SE	<i>TSHE/BENE</i>	253	12	233	0–17.5 (8.0)
MC	Martha Creek	582	100	5–20% S	<i>TSHE/BENE/GASH</i>	253	12	233	0.6–17.8 (8.5)
PC	Panther Creek	732	157	0–15% W	<i>TSHE/BENE/GASH</i>	264	13	254	0–17.5 (7.8)
OH	Ohanepecosh	622	~280	0–10% SW	<i>TSHE/ACTR</i>	197	14	385	2.2–14.2 (7.9)
TC	Trout Creek	613	~500	0–10% S	<i>TSHE/VAAL/GASH</i>	253	12	233	0–17.5 (8.0)
CR	Carbon River	607	~500	0%	<i>TSHE/POMU/OXOR</i>	346	18	137	3.1–11.8 (7.5)
CF	Cedar Flats	411	~650	0%	<i>TSHE/TITR</i>	317	20	77	5.0–14.4 (9.7)
CH	Chinook	841	~950	0%	<i>ABAM/VAAL</i>	210	17	462	–0.6 –13.8 (6.6)

\* Based on Topik et al. 1986 and Franklin et al. 1988. *TSHE*, *Tsuga heterophylla*; *BENE*, *Berberis nervosa*; *GASH*, *Gaultheria shallon*; *ACTR*, *Achlys triphylla*; *VAAL*, *Vaccinium alaskaense*; *POMU*, *Polystichum munitum*; *OXOR*, *Oxalis oregana*; *TITR*, *Tiarella trifoliata*.

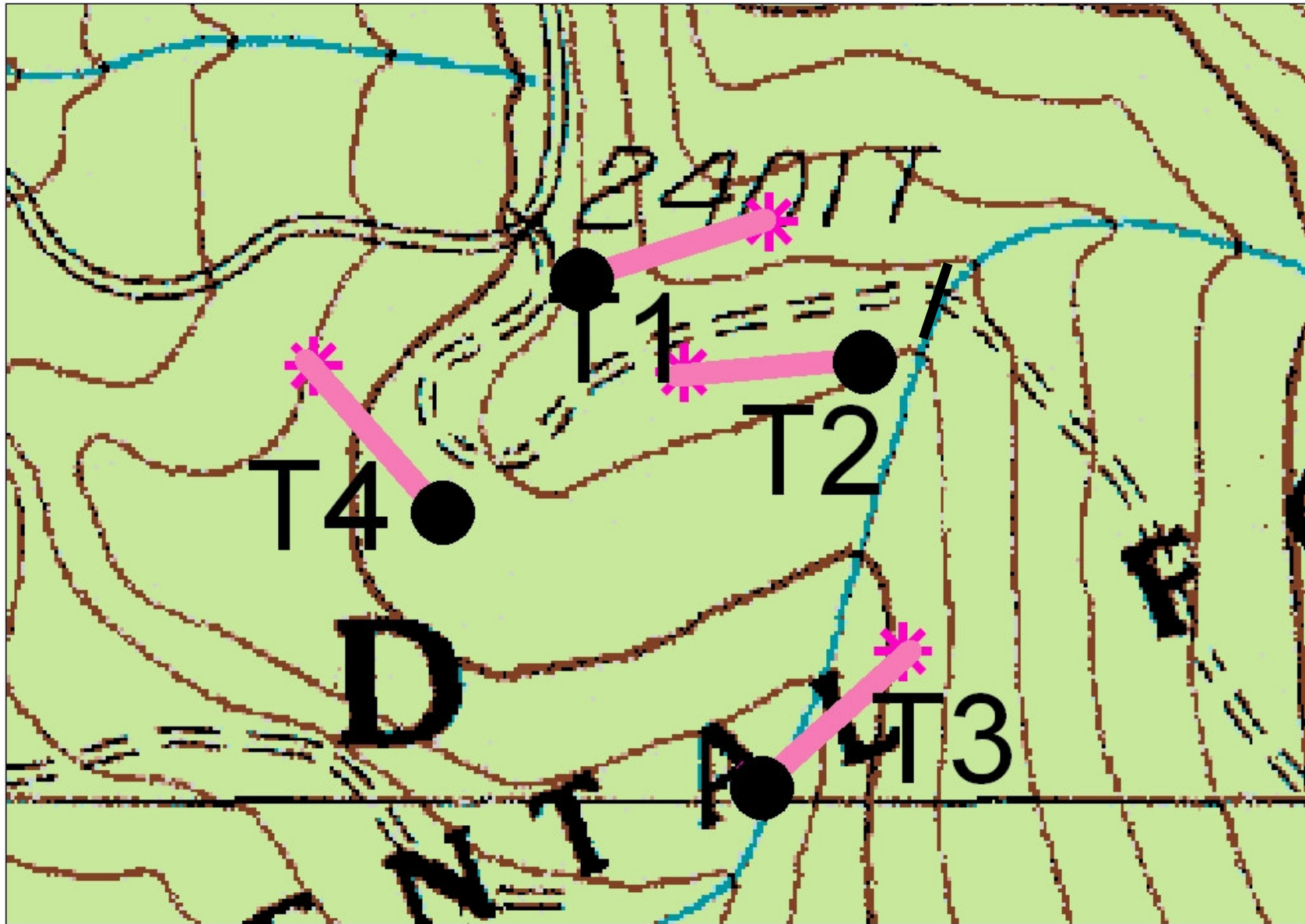
# Panther Creek UTM's

May not be accurate – unknown datum

Stand	Transect	Easting	Northing	Angle (degrees)	Length (m)
PC	T1	591484	5077341	72	130
		591608	5077381		
PC	T2	591672	5077288	267	130
		591552	5077281		
PC	T3	591602	5077007	47	130
		591697	5077096		
PC	T4	591391	5077187	319	130
		591306	5077285		

# Panther Creek

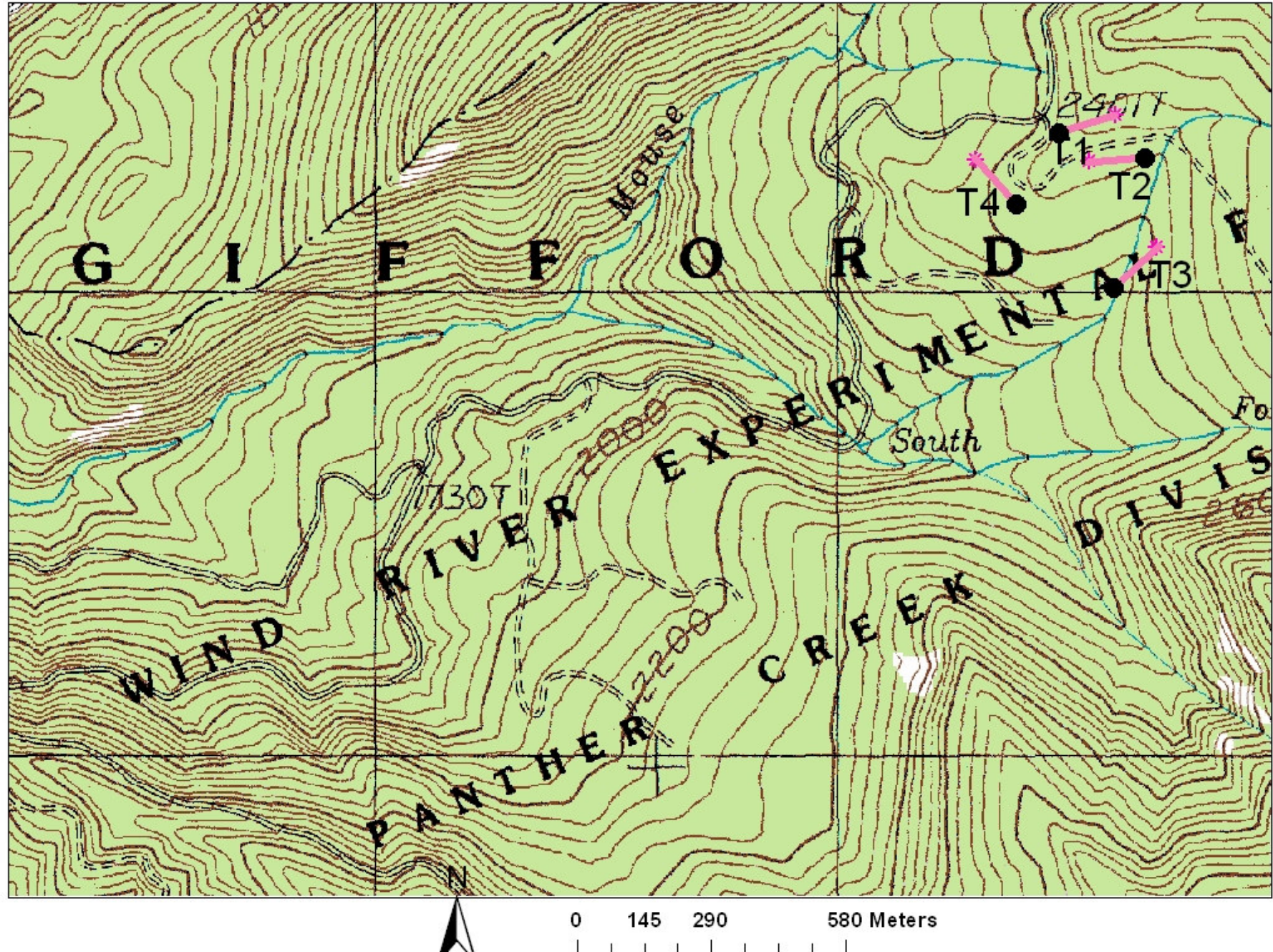
Note: map incorrect – road ends around the stream



0 45 90 180 Meters

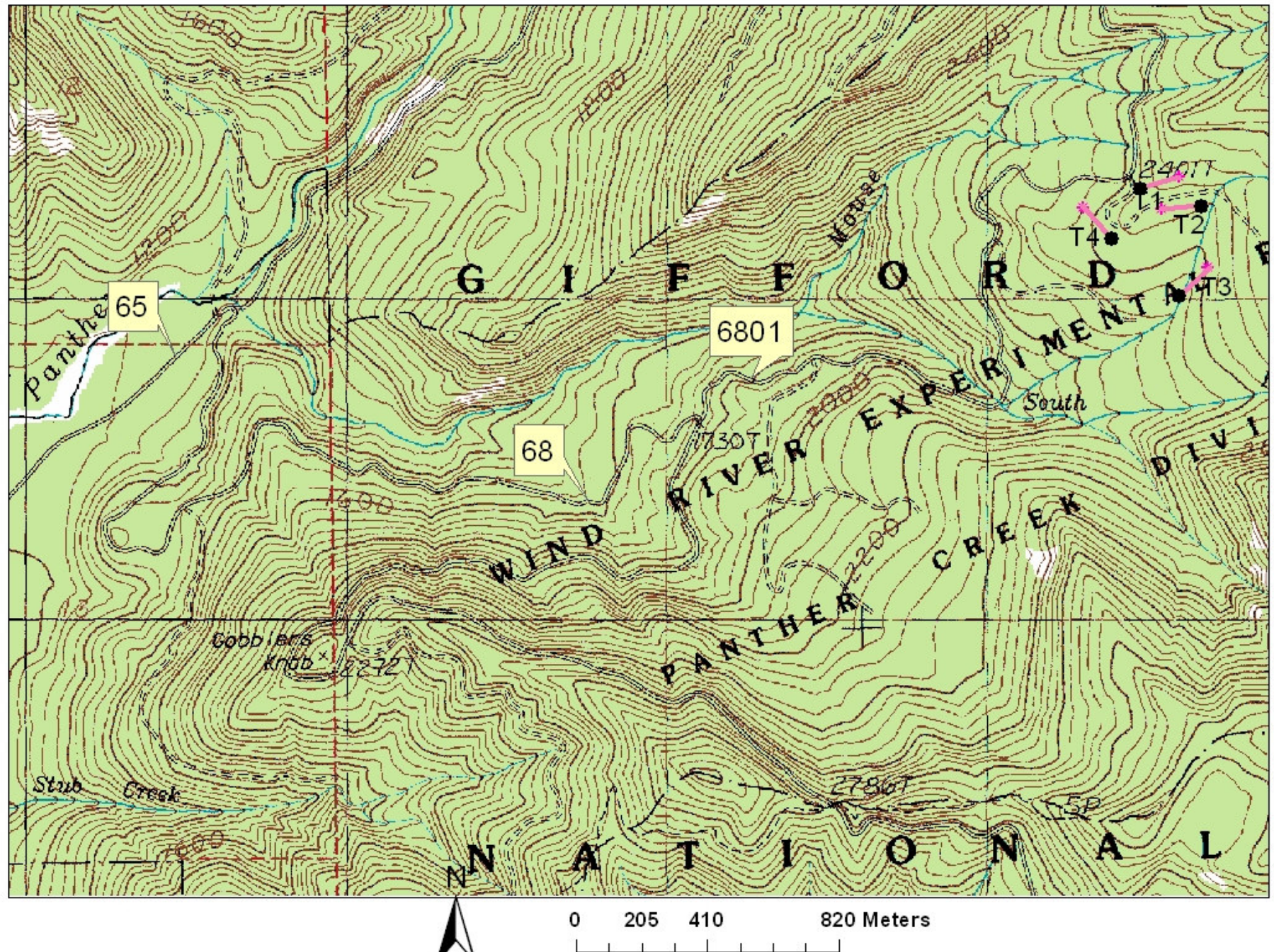


# Panther Creek



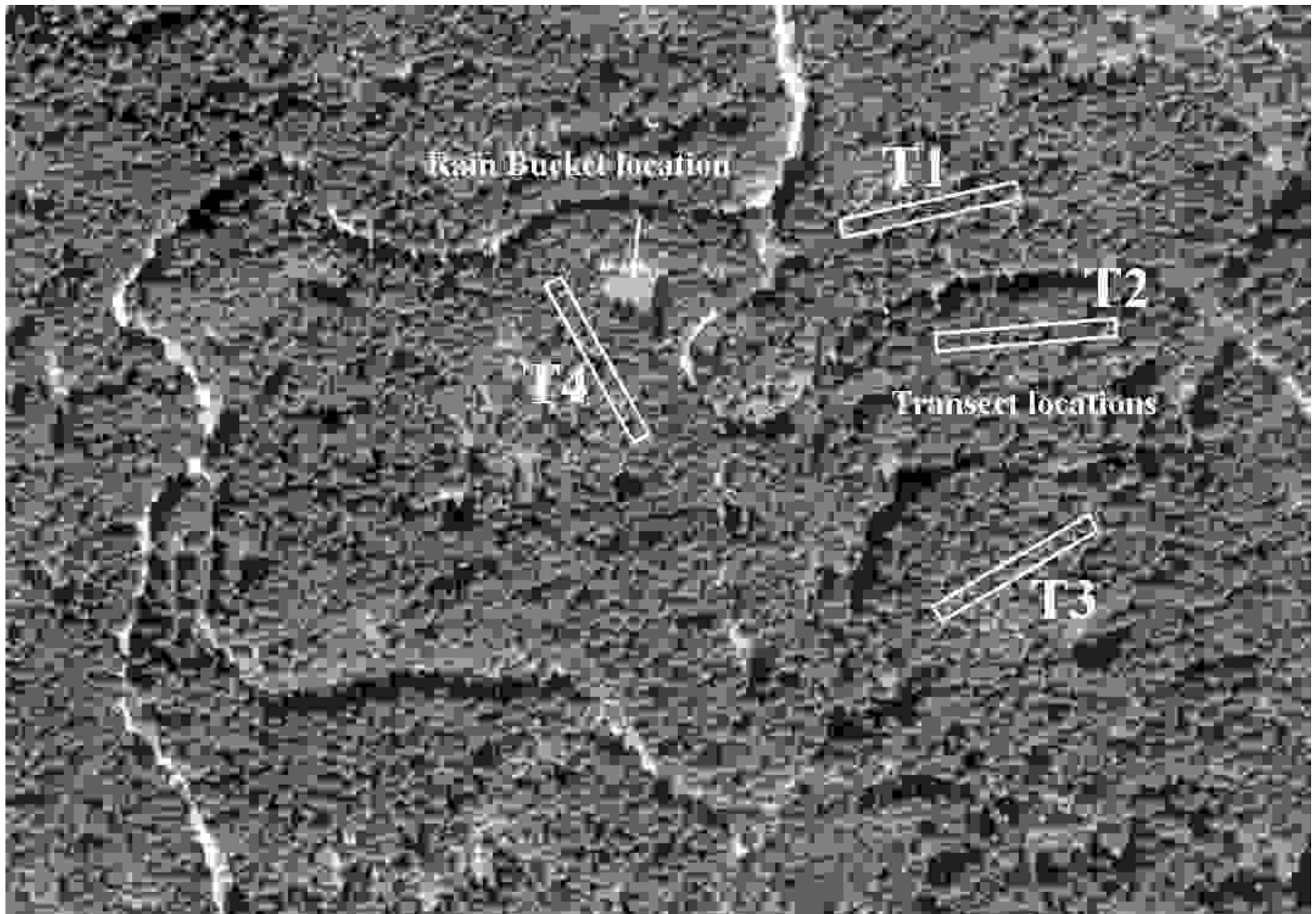


# Panther Creek





# Panther Creek



# Panther Creek Transect 1

Live tagged trees  $\geq 25\text{cm}$  dbh in green



## Legend

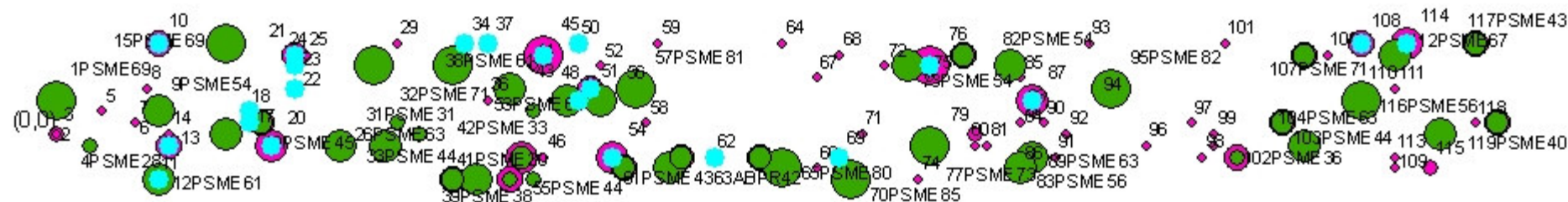
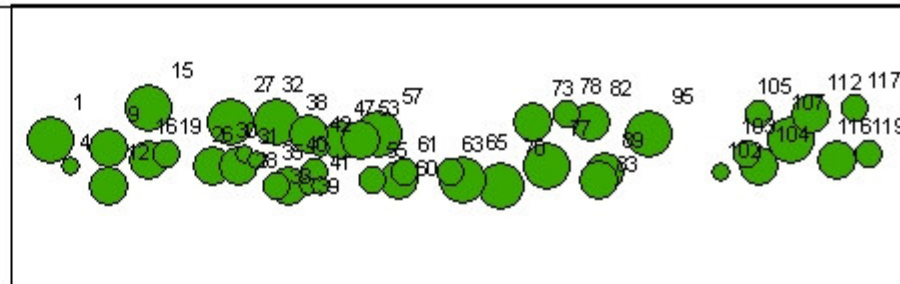
### T1\_tagged Events

#### DBH

- 28 - 38
- 39 - 52
- 53 - 67
- 68 - 85

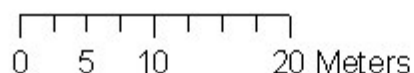


# Panther Creek Transect 1 (all trees) Live tagged trees $\geq 25\text{cm}$ dbh in green Dead trees highlighted in blue



130 m long x 13 m wide  
angle = 72 degrees

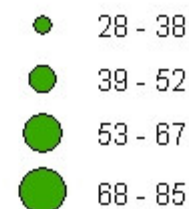
1 centimeter equals 5.596791 meters



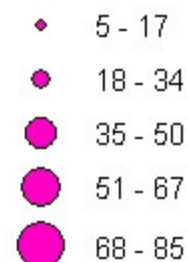
## Legend

### T1\_tagged Events T1\_all Events

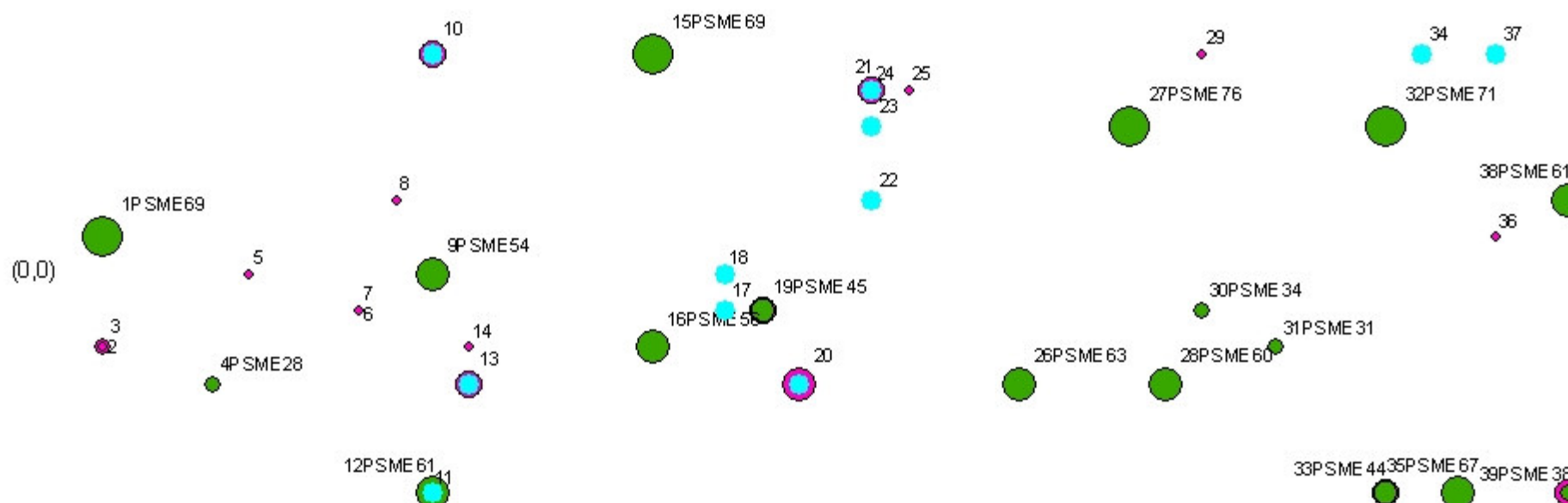
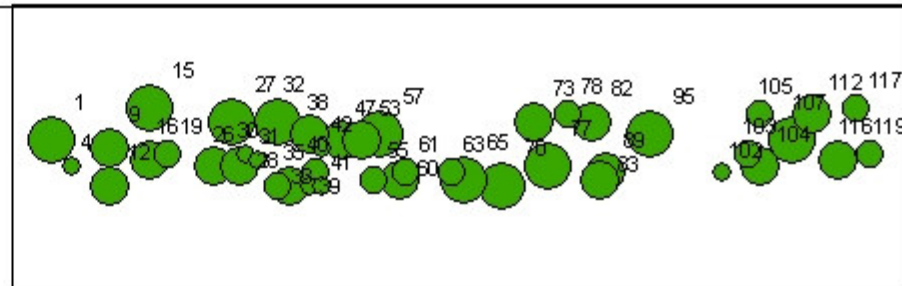
DBH



DBH

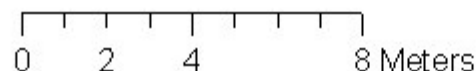


# Panther Creek Transect 1 (all trees) Live tagged trees $\geq 25\text{cm}$ dbh in green Dead trees highlighted in blue



130 m long x 13 m wide  
angle = 72 degrees

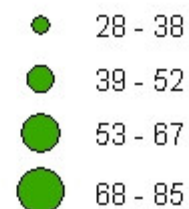
1 centimeter equals 1.772580 meters



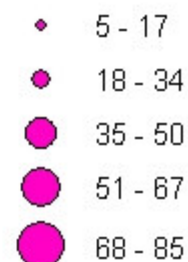
## Legend

### T1\_tagged Events T1\_all Events

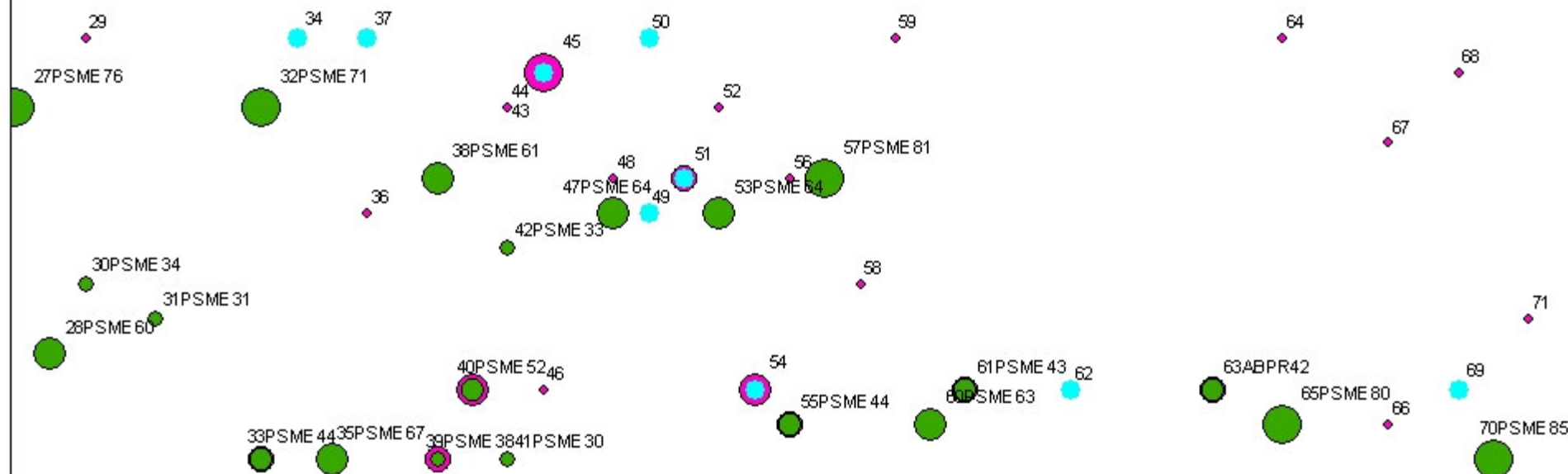
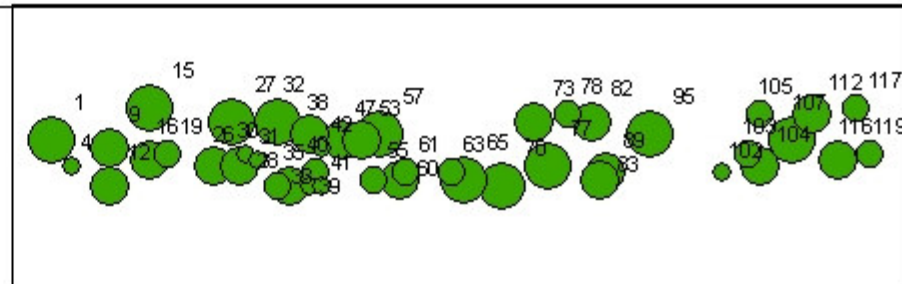
#### DBH



#### DBH



# Panther Creek Transect 1 (all trees) Live tagged trees $\geq 25\text{cm}$ dbh in green Dead trees highlighted in blue



130 m long x 13 m wide  
angle = 72 degrees

1 centimeter equals 1.772580 meters



0 2 4 8 Meters

## Legend

### T1\_tagged Events T1\_all Events

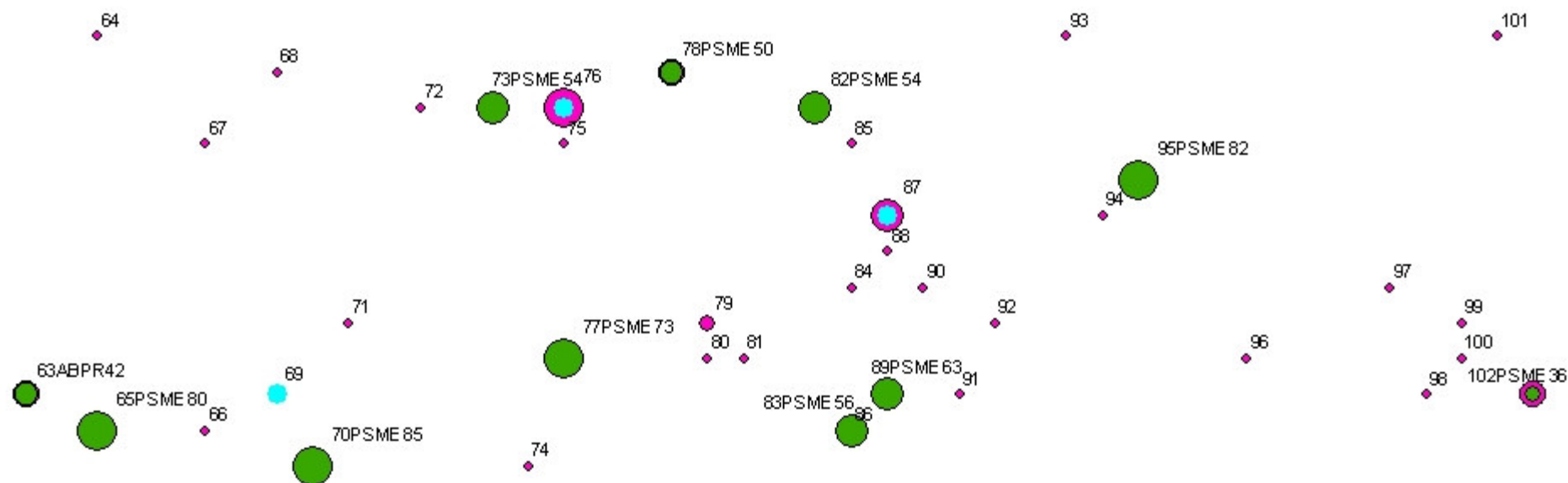
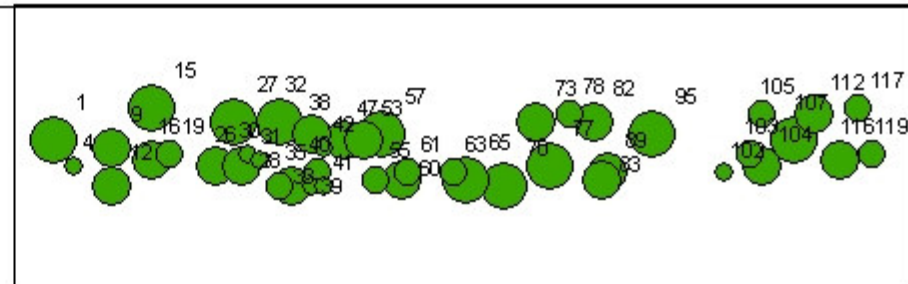
DBH

- 28 - 38
- 39 - 52
- 53 - 67
- 68 - 85

DBH

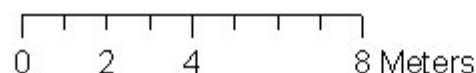
- 5 - 17
- 18 - 34
- 35 - 50
- 51 - 67
- 68 - 85

# Panther Creek Transect 1 (all trees) Live tagged trees $\geq 25\text{cm}$ dbh in green Dead trees highlighted in blue



130 m long x 13 m wide  
angle = 72 degrees

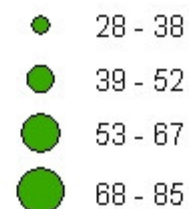
1 centimeter equals 1.772580 meters



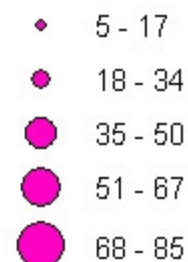
## Legend

### T1\_tagged Events T1\_all Events

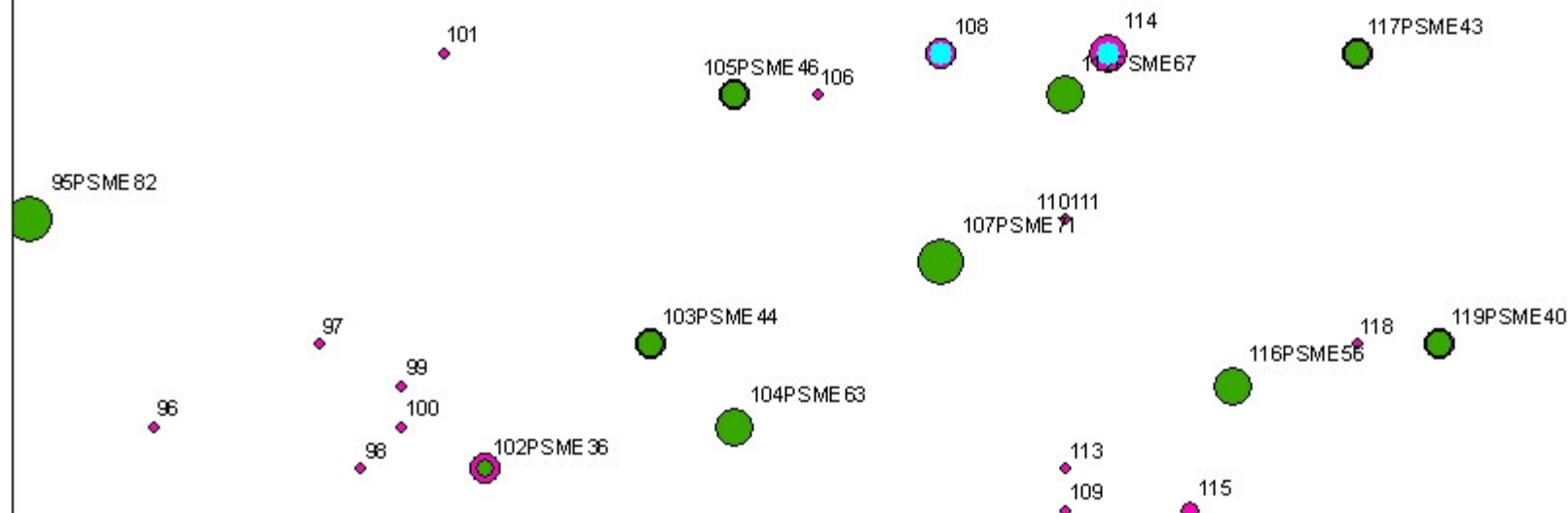
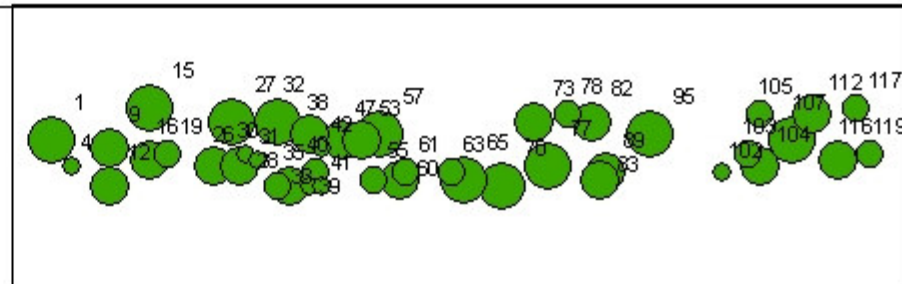
#### DBH



#### DBH

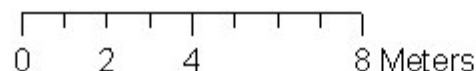


# Panther Creek Transect 1 (all trees) Live tagged trees $\geq 25\text{cm}$ dbh in green Dead trees highlighted in blue



130 m long x 13 m wide  
angle = 72 degrees

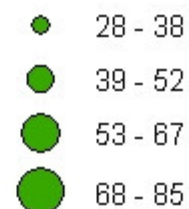
1 centimeter equals 1.772580 meters



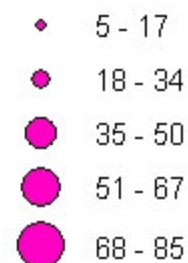
## Legend

### T1\_tagged Events T1\_all Events

#### DBH

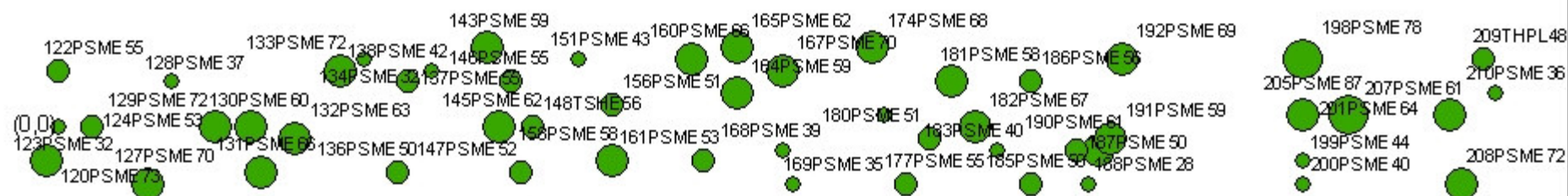


#### DBH



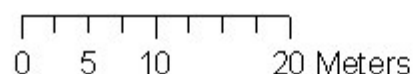
# Panther Creek Transect 2

Live tagged trees  $\geq 25\text{cm}$  dbh in green



130 m long x 13 m wide  
angle = 267 degrees

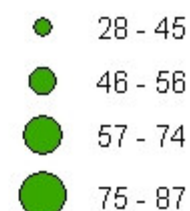
1 centimeter equals 5.640860 meters



## Legend

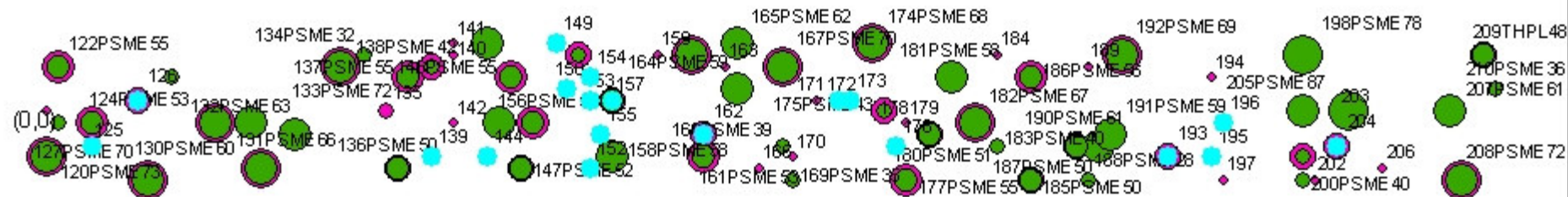
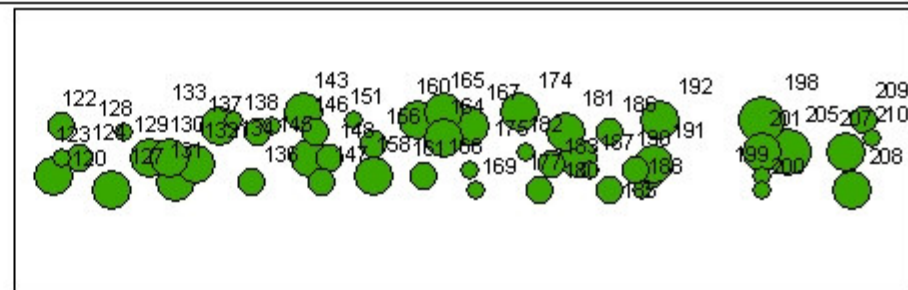
### T2\_tagged Events

#### DBH



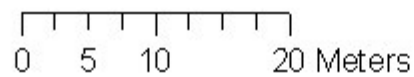


# Panther Creek Transect 2 (all trees) Live tagged trees $\geq 25\text{cm}$ dbh in green Dead trees highlighted in blue



130 m long x 13 m wide  
 angle = 267 degrees

1 centimeter equals 5.646342 meters



## T2\_tagged Events T2\_all Events

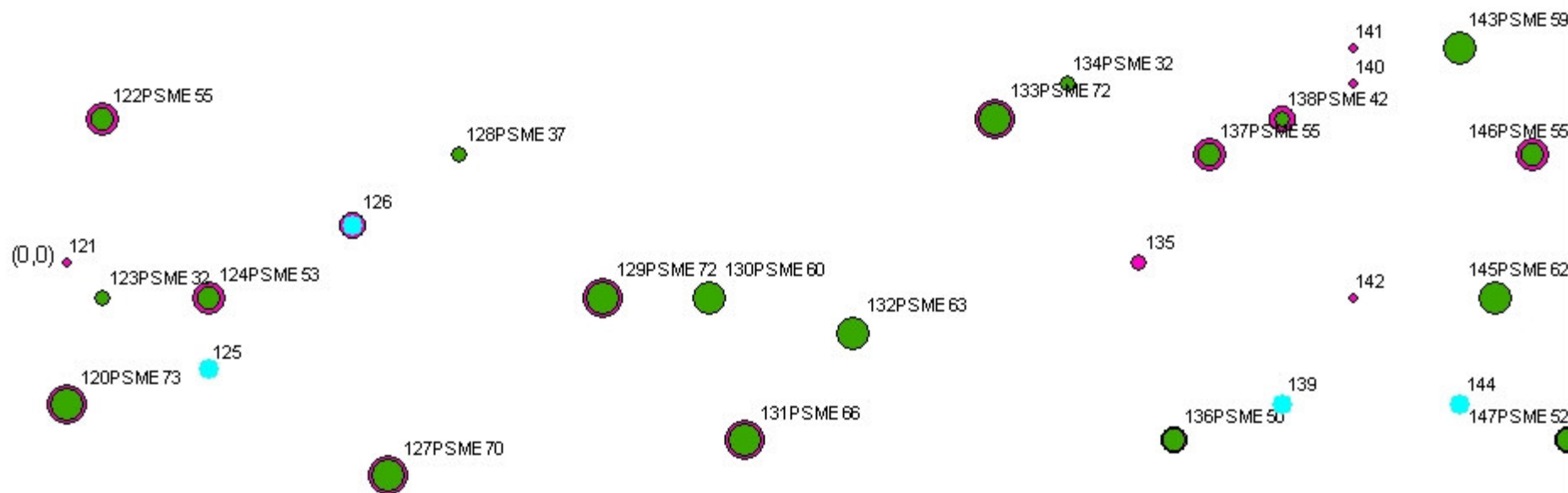
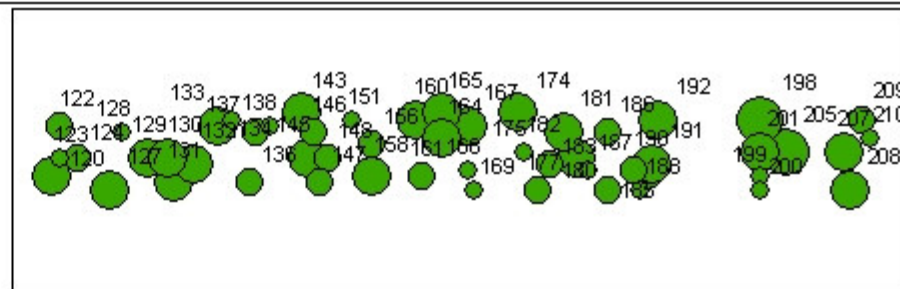
DBH

- 28 - 45
- 46 - 56
- 57 - 74
- 75 - 87

DBH

- 5 - 18
- 19 - 40
- 41 - 52
- 53 - 64
- 65 - 87

# Panther Creek Transect 2 (all trees) Live tagged trees $\geq 25\text{cm}$ dbh in green Dead trees highlighted in blue



130 m long x 13 m wide  
angle = 267 degrees

1 centimeter equals 1.786538 meters



0 2 4 8 Meters

## T2\_tagged Events T2\_all Events

DBH

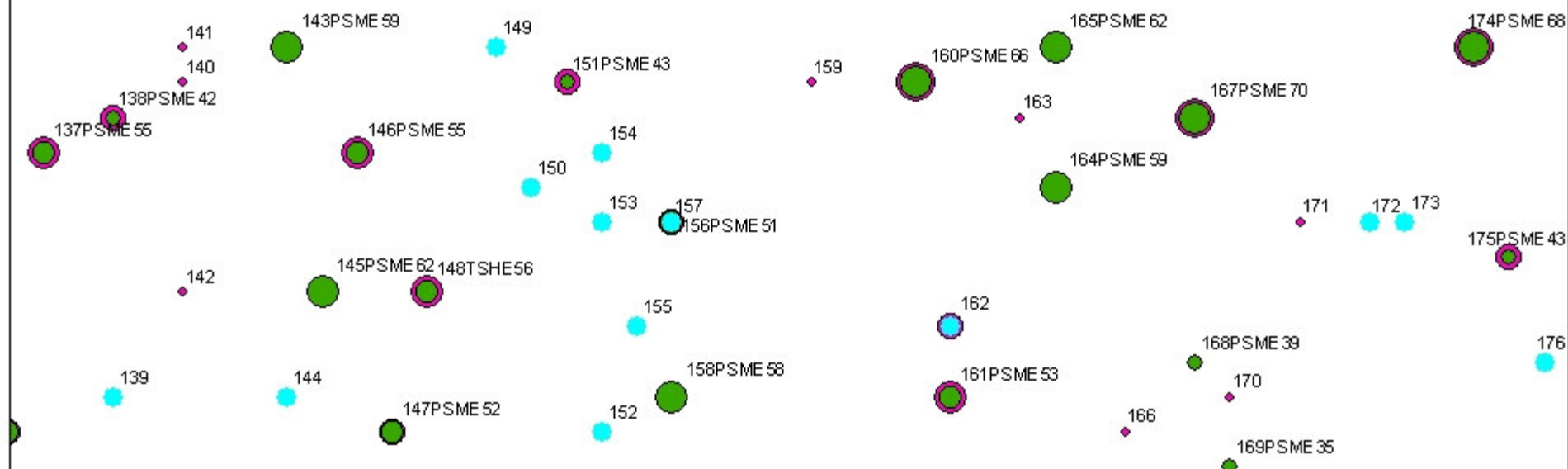
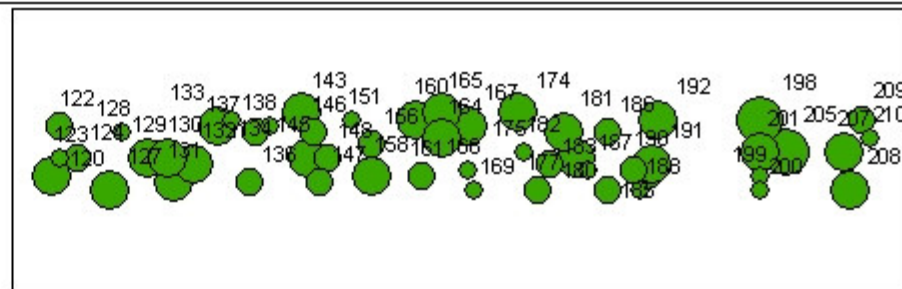
- 28 - 45
- 46 - 56
- 57 - 74
- 75 - 87

DBH

- 5 - 18
- 19 - 40
- 41 - 52
- 53 - 64
- 65 - 87

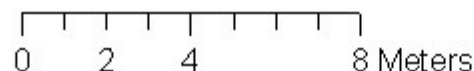


# Panther Creek Transect 2 (all trees) Live tagged trees $\geq 25\text{cm}$ dbh in green Dead trees highlighted in blue



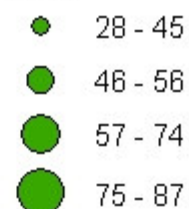
130 m long x 13 m wide  
angle = 267 degrees

1 centimeter equals 1.786538 meters

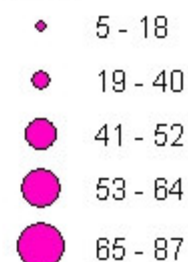


## T2\_tagged Events T2\_all Events

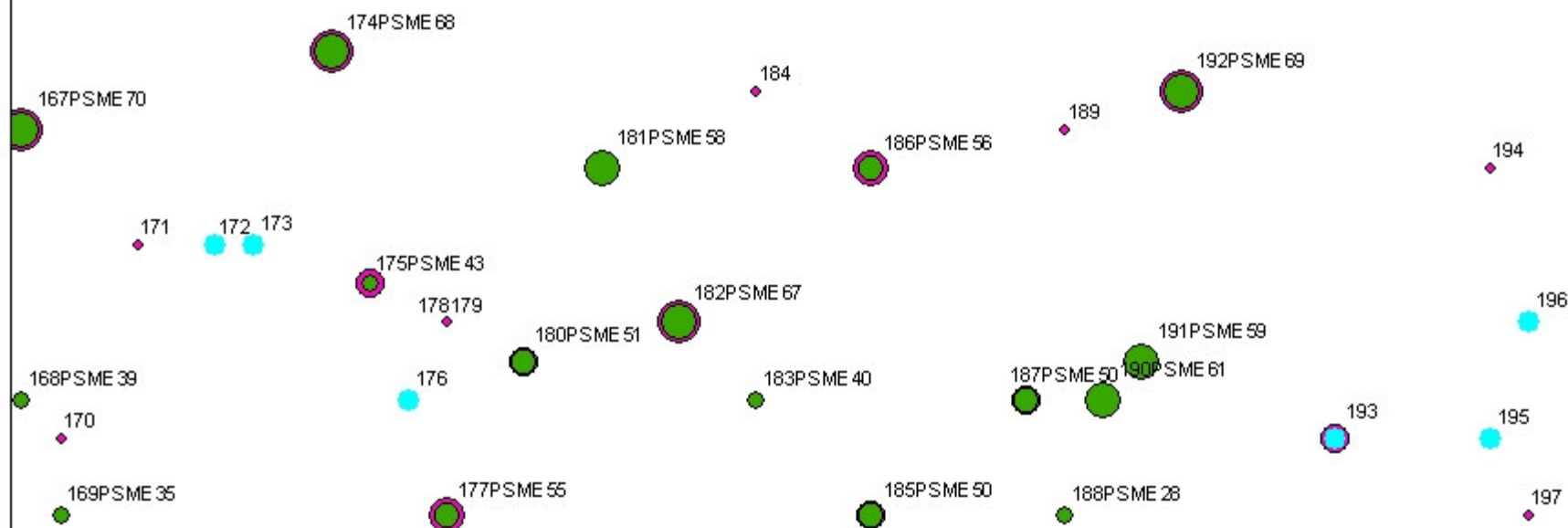
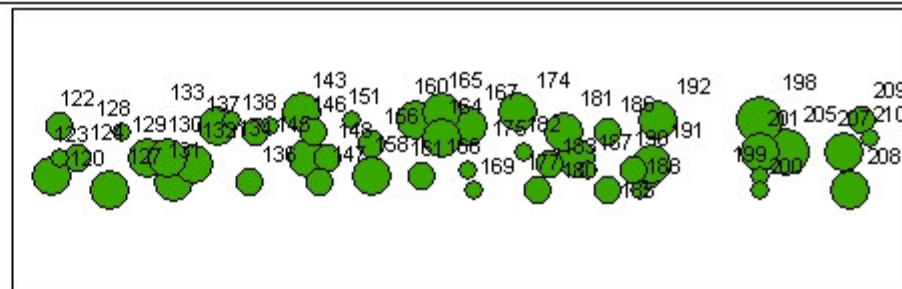
DBH



DBH

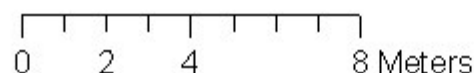


# Panther Creek Transect 2 (all trees) Live tagged trees $\geq 25\text{cm}$ dbh in green Dead trees highlighted in blue



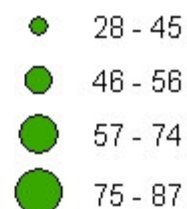
130 m long x 13 m wide  
angle = 267 degrees

1 centimeter equals 1.786538 meters

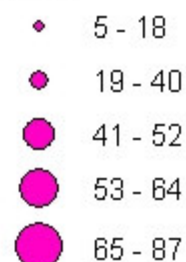


## T2\_tagged Events T2\_all Events

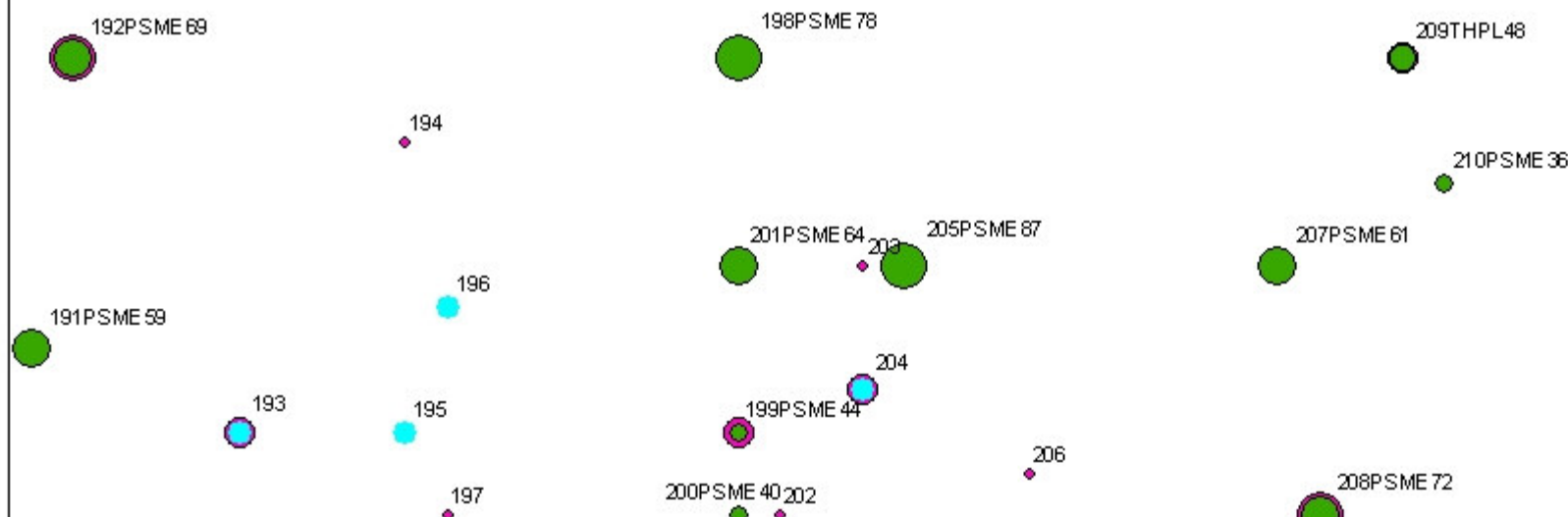
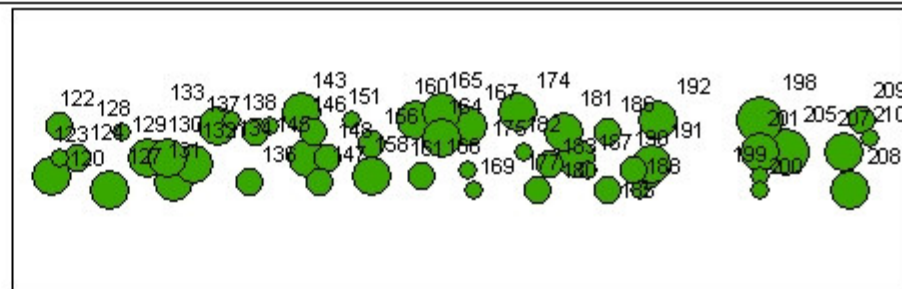
DBH



DBH

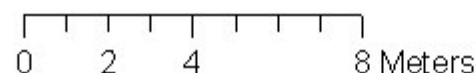


# Panther Creek Transect 2 (all trees) Live tagged trees $\geq 25\text{cm}$ dbh in green Dead trees highlighted in blue



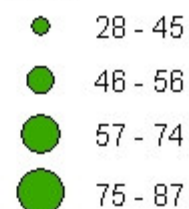
130 m long x 13 m wide  
angle = 267 degrees

1 centimeter equals 1.786538 meters

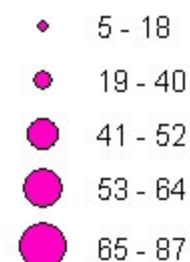


## T2\_tagged Events T2\_all Events

DBH



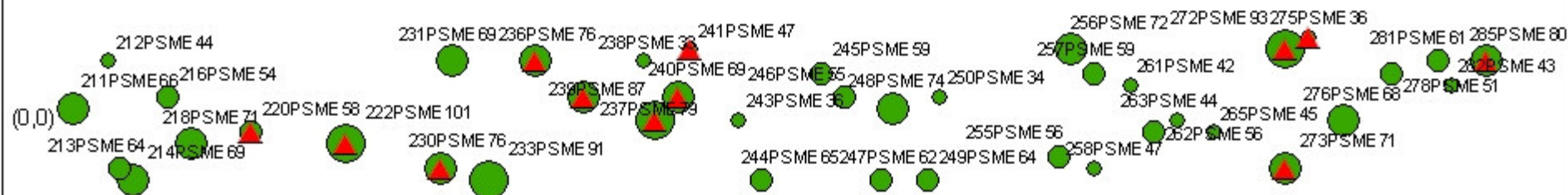
DBH



# Panther Creek Transect 3

Live tagged trees  $\geq 25\text{cm}$  dbh in green

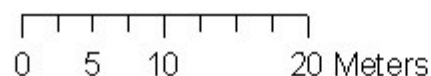
Red triangles represent tagged trees



130 m long x 13 m wide  
angle = 47 degrees



1 centimeter equals 5.288306 meters



## Legend

### T3\_tagged Events

#### DBH

● 33 - 47

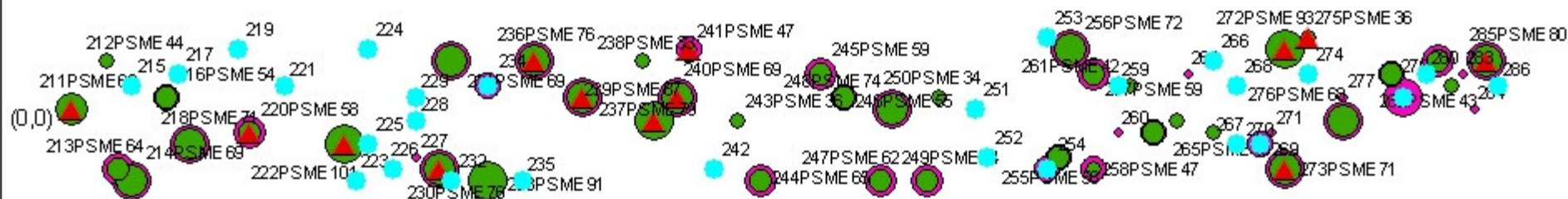
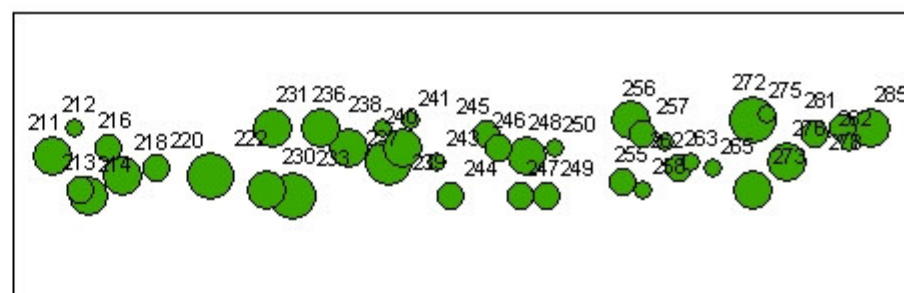
● 48 - 65

● 66 - 80

● 81 - 101

▲ T3\_tagged Events selection

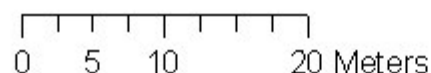
Panther Creek Transect 3 (all trees)  
 Live tagged trees  $\geq 25\text{cm}$  dbh in green  
 Dead trees highlighted in blue  
 Red triangles represent rigged trees



130 m long x 13 m wide  
 angle = 47 degrees



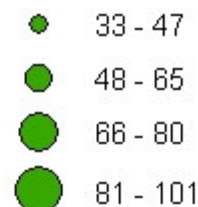
1 centimeter equals 5.293445 meters



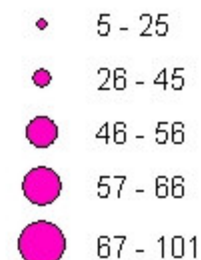
## Legend

T3\_tagged Events T3\_all Events

DBH



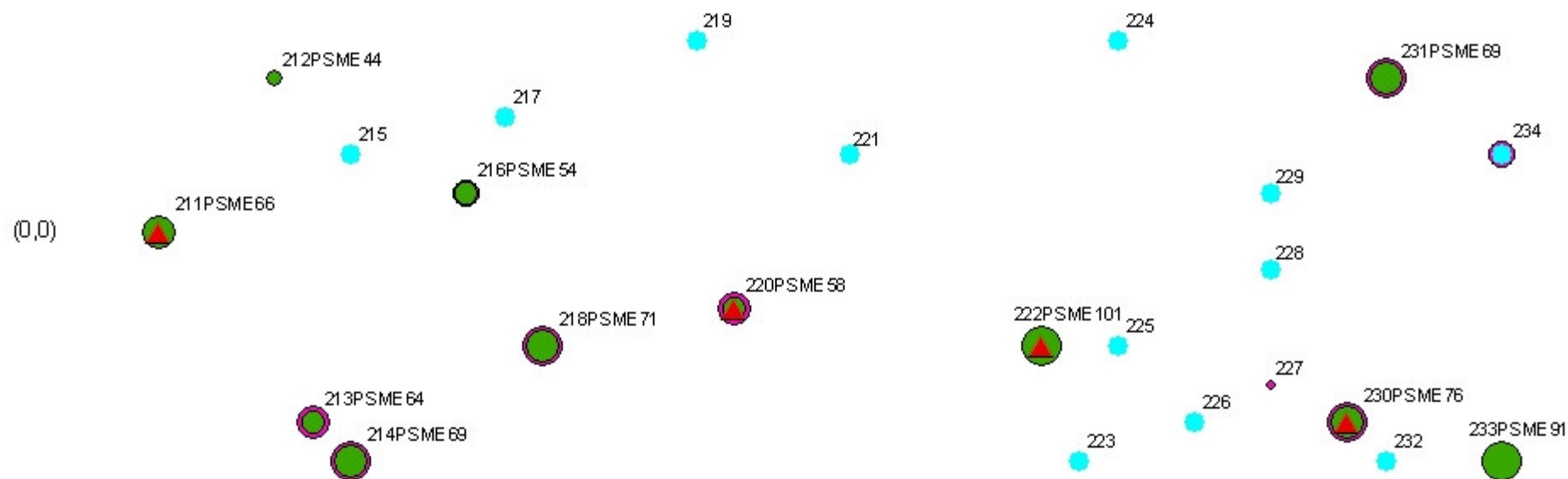
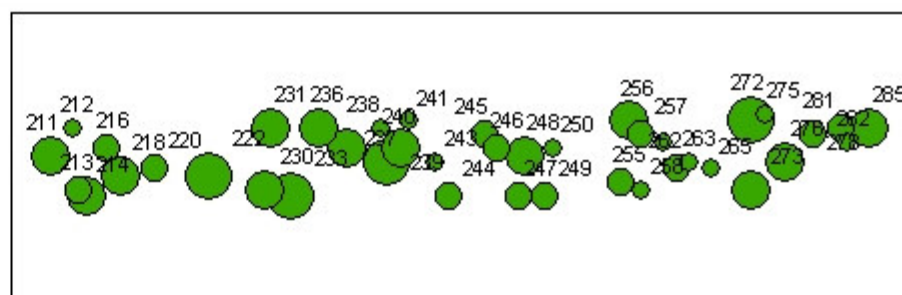
DBH



T3 tagged Events s



Panther Creek Transect 3 (all trees)  
 Live tagged trees  $\geq 25\text{cm}$  dbh in green  
 Dead trees highlighted in blue  
 Red triangles represent rigged trees



### Legend

#### T3\_tagged Events T3\_all Events

##### DBH

- 33 - 47
- 48 - 65
- 66 - 80
- 81 - 101

##### DBH

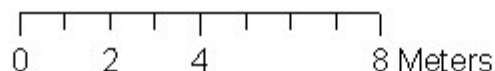
- 5 - 25
- 26 - 45
- 46 - 56
- 57 - 66
- 67 - 101



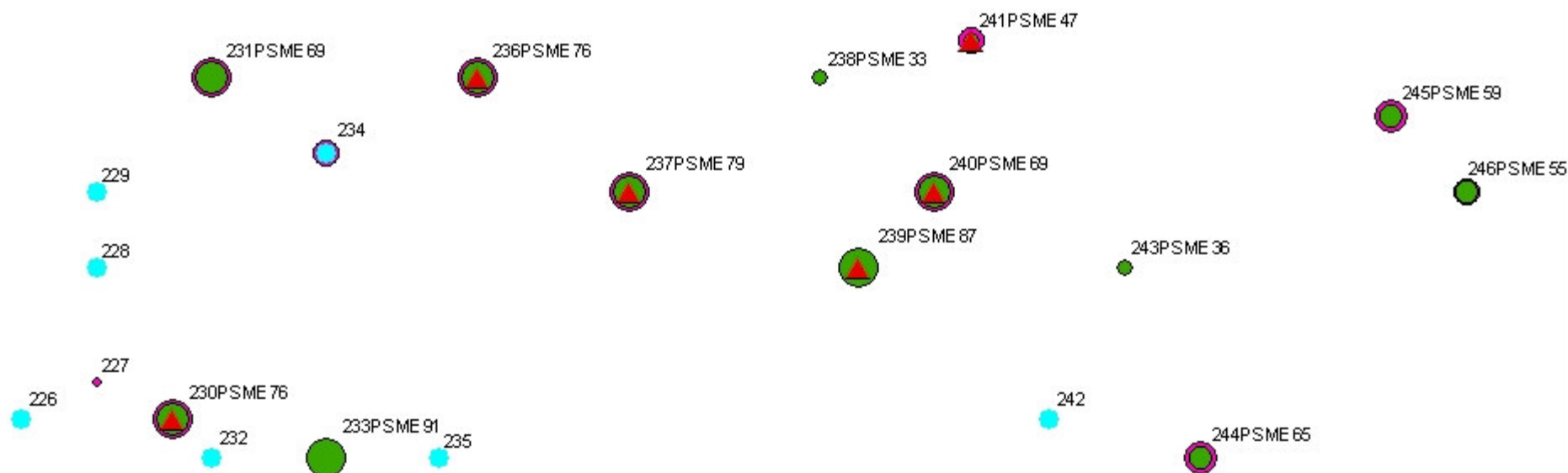
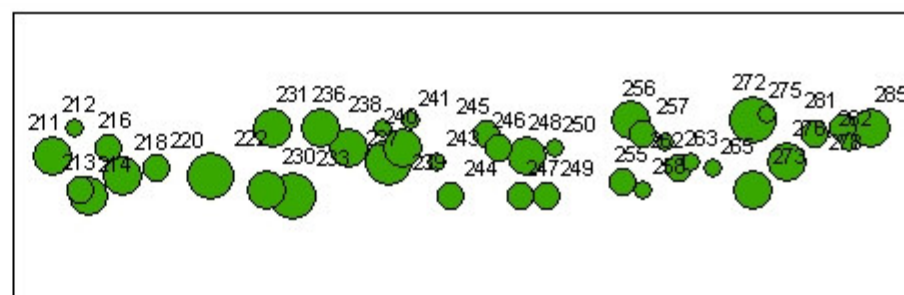
T3 tagged Events s

130 m long x 13 m wide  
 angle = 47 degrees

1 centimeter equals 1.674879 meters



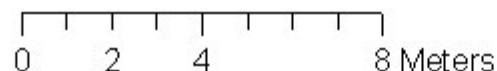
Panther Creek Transect 3 (all trees)  
 Live tagged trees  $\geq 25\text{cm}$  dbh in green  
 Dead trees highlighted in blue  
 Red triangles represent rigged trees



130 m long x 13 m wide  
 angle = 47 degrees



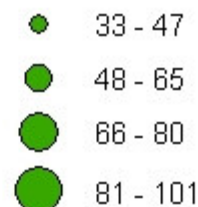
1 centimeter equals 1.674879 meters



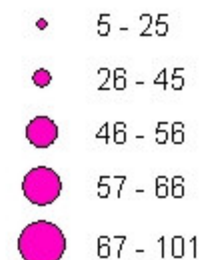
## Legend

**T3\_tagged Events** **T3\_all Events**

**DBH**

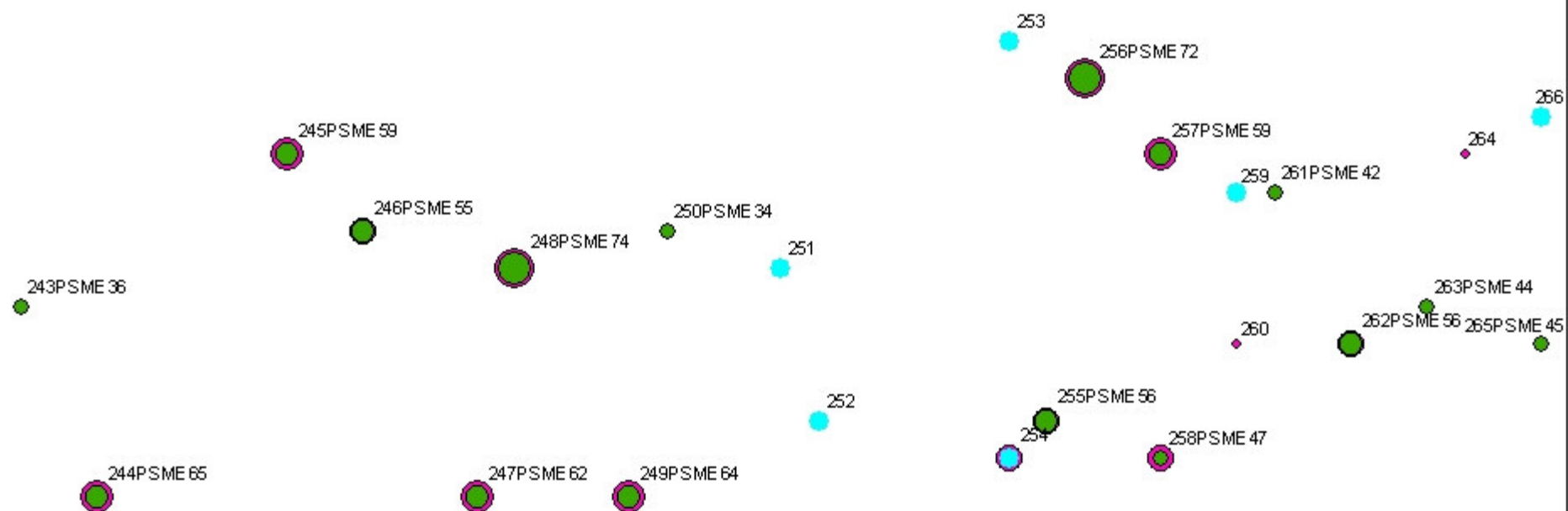
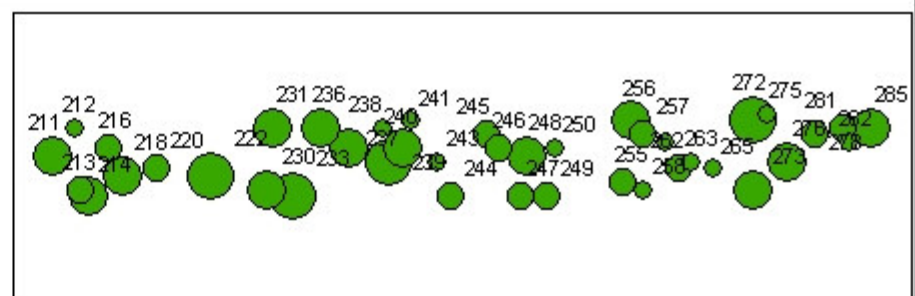


**DBH**



T3 tagged Events s

Panther Creek Transect 3 (all trees)  
 Live tagged trees  $\geq 25\text{cm}$  dbh in green  
 Dead trees highlighted in blue  
 Red triangles represent rigged trees



### Legend

**T3\_tagged Events** **T3\_all Events**

**DBH**

- 33 - 47
- 48 - 65
- 66 - 80
- 81 - 101

**DBH**

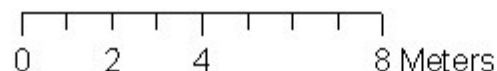
- 5 - 25
- 26 - 45
- 46 - 56
- 57 - 66
- 67 - 101



T3 tagged Events s

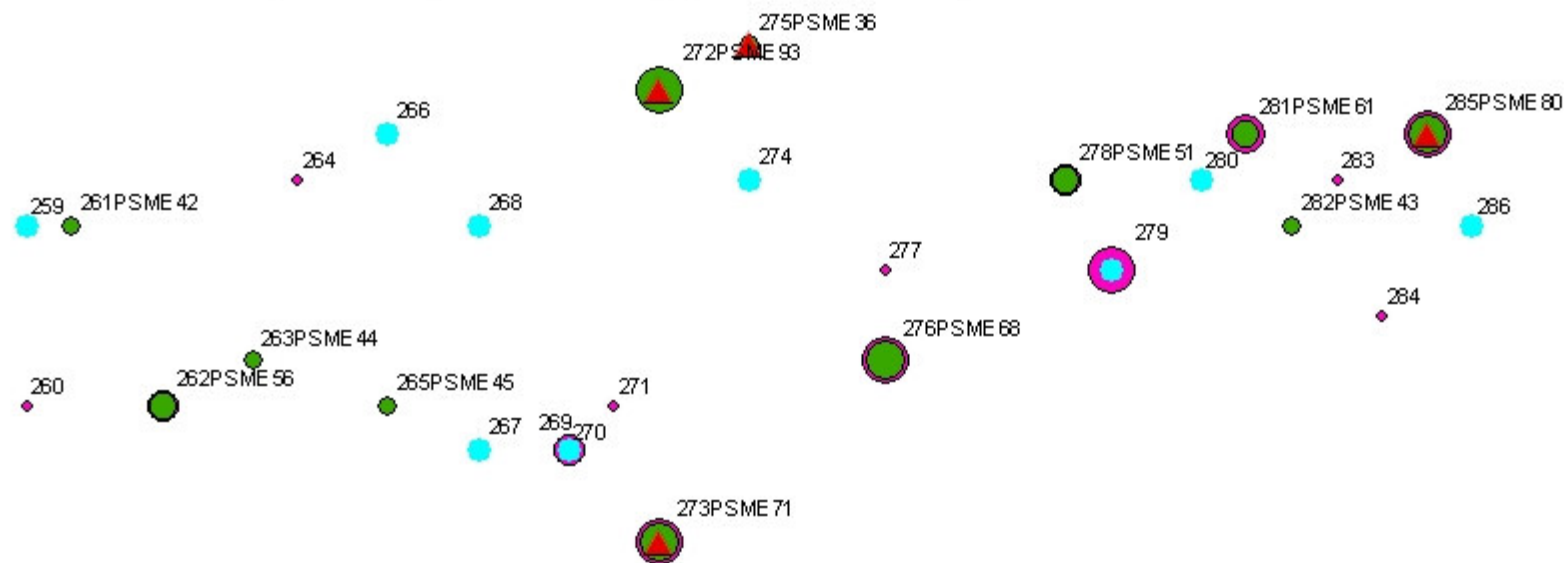
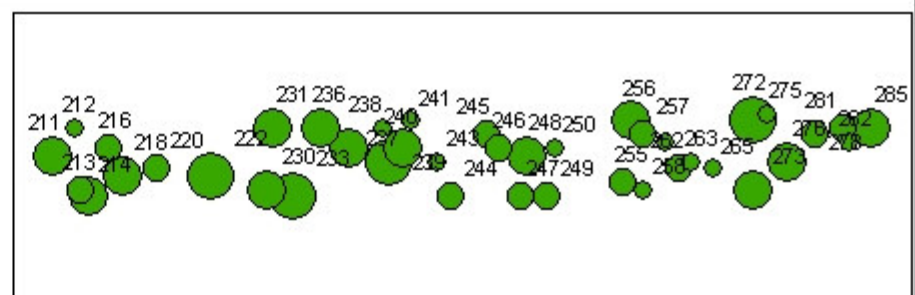
130 m long x 13 m wide  
 angle = 47 degrees

1 centimeter equals 1.674879 meters





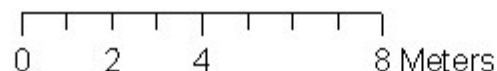
Panther Creek Transect 3 (all trees)  
 Live tagged trees  $\geq 25\text{cm}$  dbh in green  
 Dead trees highlighted in blue  
 Red triangles represent rigged trees



130 m long x 13 m wide  
 angle = 47 degrees



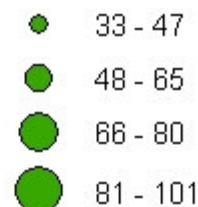
1 centimeter equals 1.674879 meters



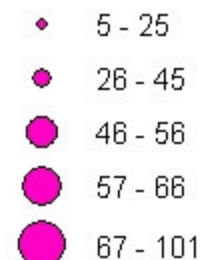
## Legend

**T3\_tagged Events** **T3\_all Events**

**DBH**



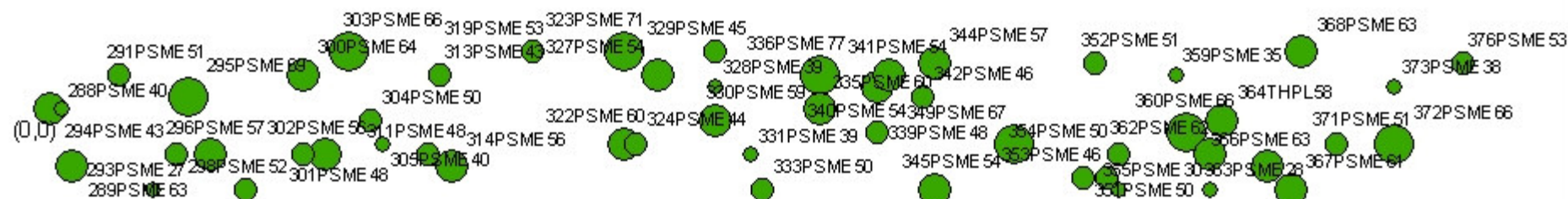
**DBH**



T3 tagged Events s

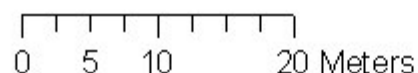
# Panther Creek Transect 4

Live tagged trees  $\geq 25\text{cm}$  dbh in green



130 m long x 13 m wide  
angle = 319 degrees

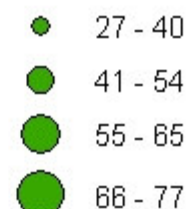
1 centimeter equals 5.552721 meters



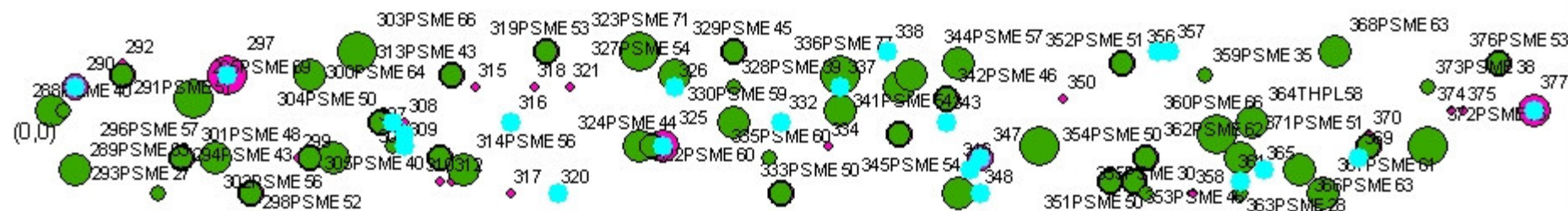
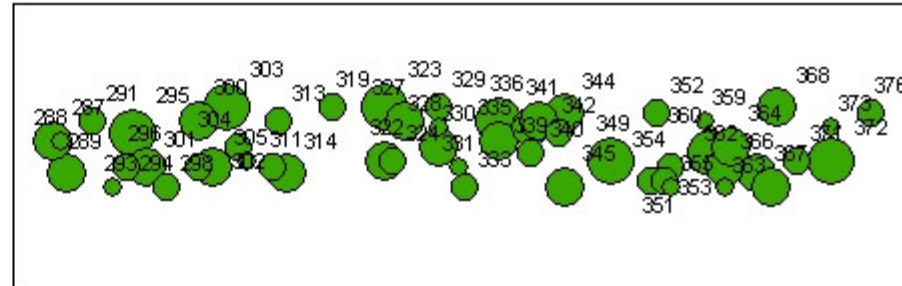
## Legend

### T4\_tagged Events

#### DBH

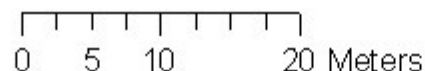


# Panther Creek Transect 4 (all trees) Live tagged trees $\geq 25\text{cm}$ dbh in green Dead trees highlighted in blue



130 m long x 13 m wide  
angle = 319 degrees

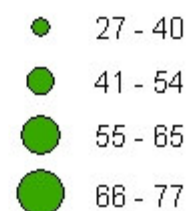
1 centimeter equals 5.425782 meters



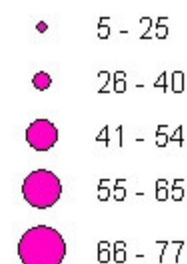
## Legend

### T4\_tagged Events T4\_all Events

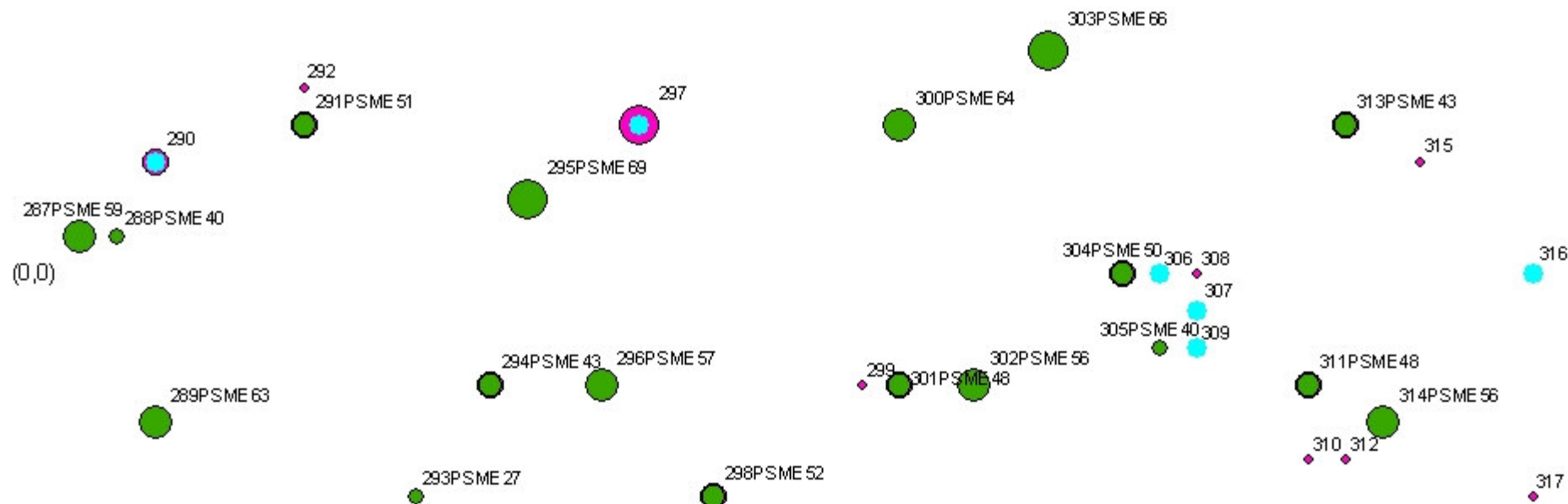
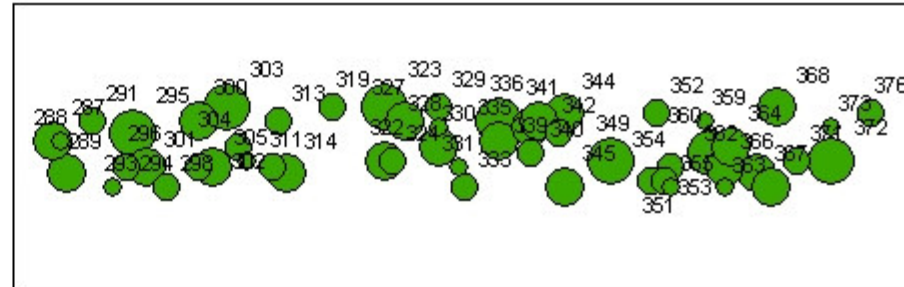
DBH



DBH



# Panther Creek Transect 4 (all trees) Live tagged trees $\geq 25\text{cm}$ dbh in green Dead trees highlighted in blue



130 m long x 13 m wide  
angle = 319 degrees

1 centimeter equals 1.716751 meters

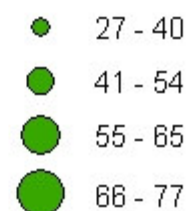
0 2 4 8 Meters



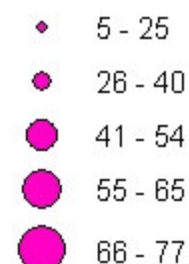
## Legend

T4\_tagged Events T4\_all Events

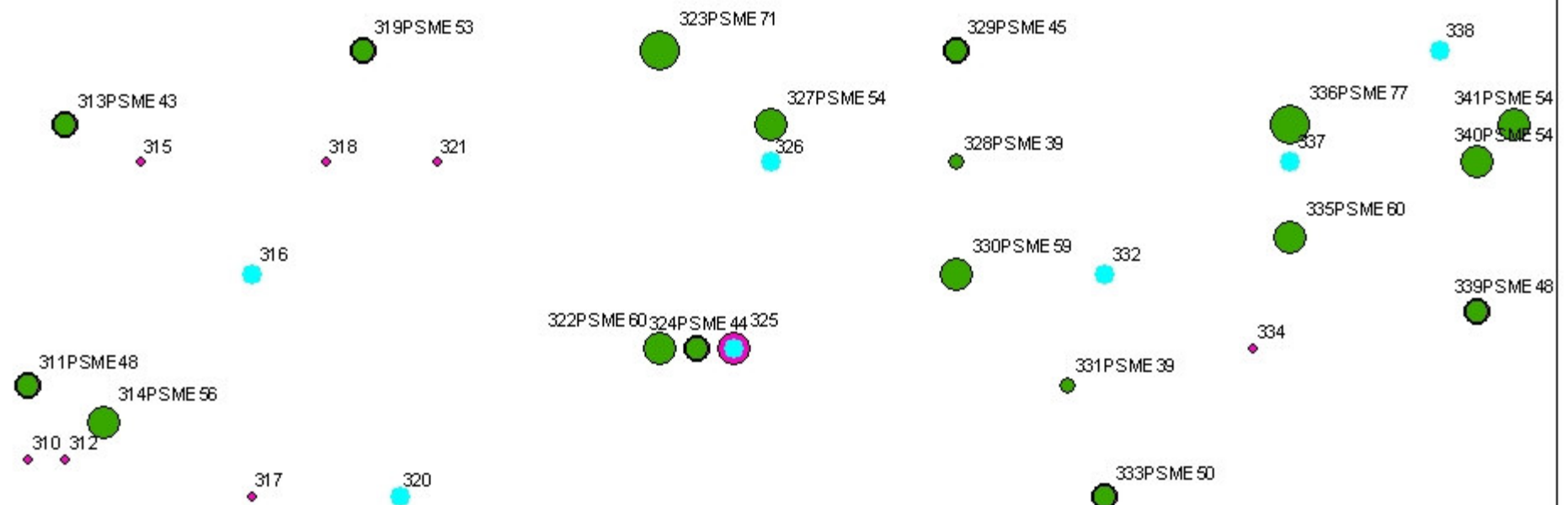
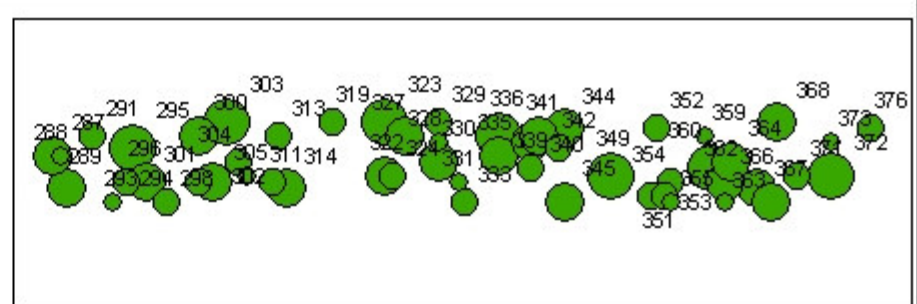
DBH



DBH



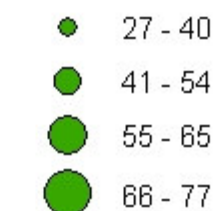
# Panther Creek Transect 4 (all trees) Live tagged trees $\geq 25\text{cm}$ dbh in green Dead trees highlighted in blue



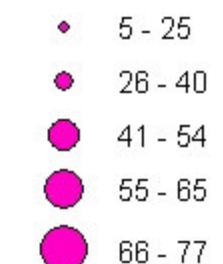
## Legend

### T4\_tagged Events T4\_all Events

#### DBH

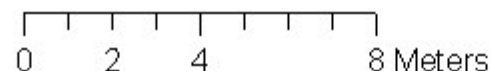


#### DBH



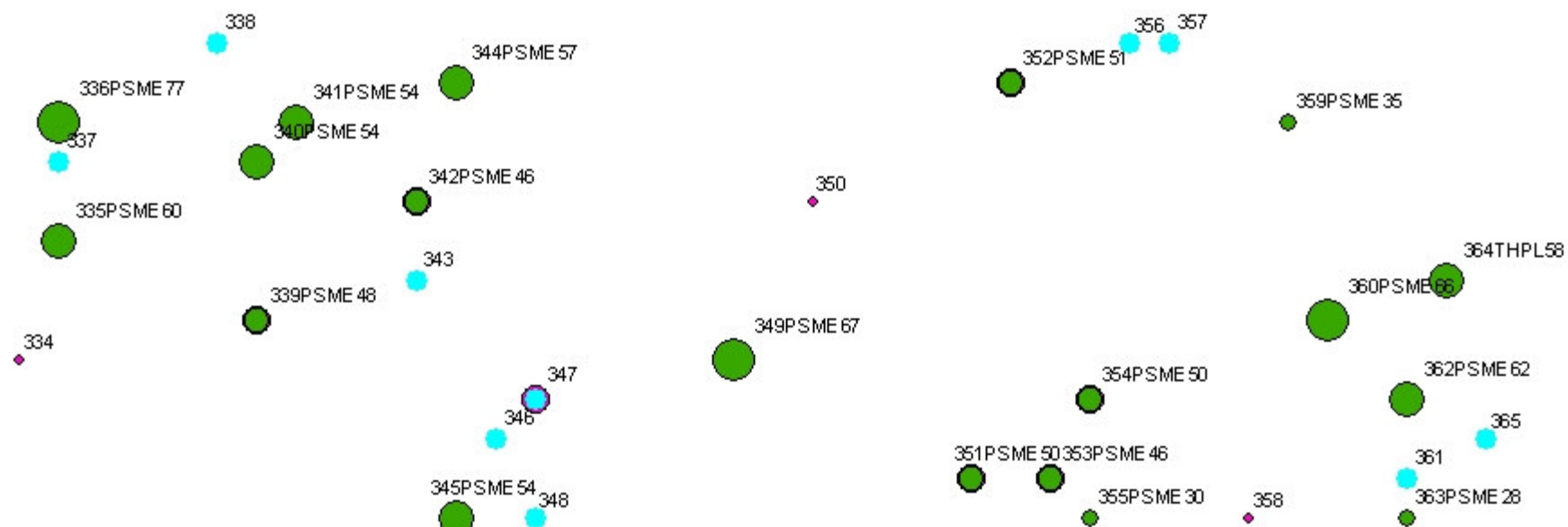
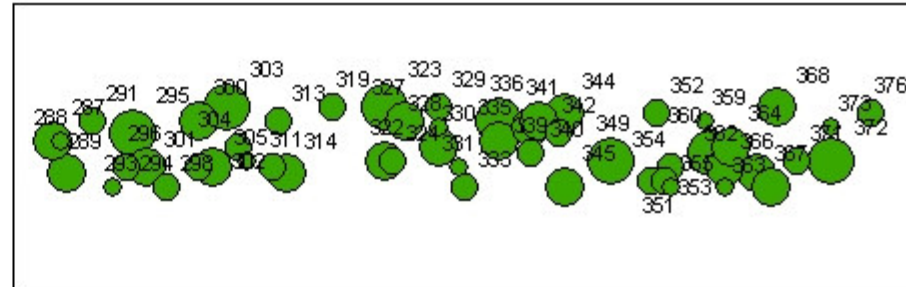
130 m long x 13 m wide  
angle = 319 degrees

1 centimeter equals 1.716751 meters



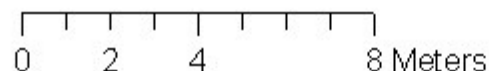


# Panther Creek Transect 4 (all trees) Live tagged trees $\geq 25\text{cm}$ dbh in green Dead trees highlighted in blue



130 m long x 13 m wide  
angle = 319 degrees

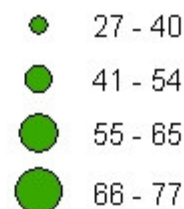
1 centimeter equals 1.716751 meters



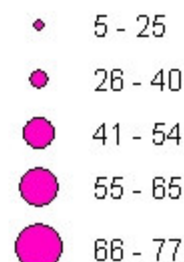
## Legend

### T4\_tagged Events T4\_all Events

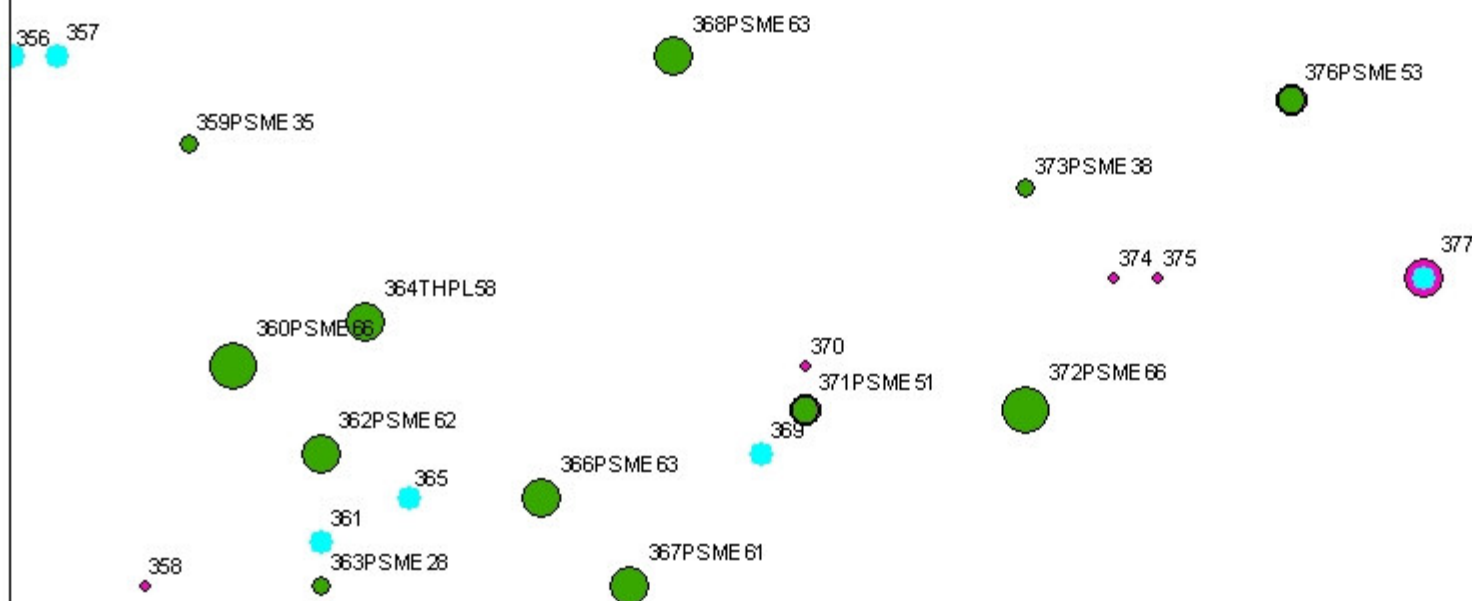
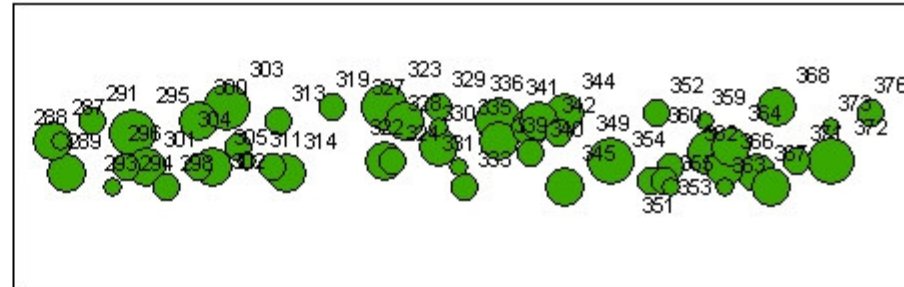
#### DBH



#### DBH

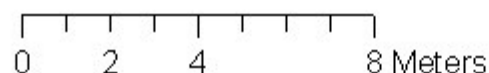


# Panther Creek Transect 4 (all trees) Live tagged trees $\geq 25\text{cm}$ dbh in green Dead trees highlighted in blue



130 m long x 13 m wide  
angle = 319 degrees

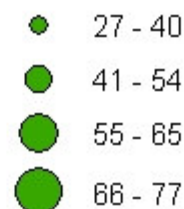
1 centimeter equals 1.716751 meters



## Legend

### T4\_tagged Events T4\_all Events

#### DBH



#### DBH

